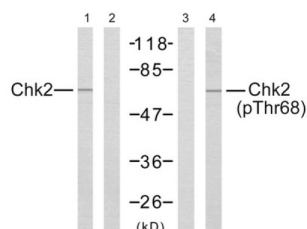
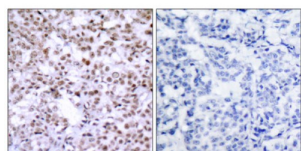


## Serine/threonine-Protein Kinase Chk2 (CHK2) Antibody

Catalogue No.: abx012850



Western blot analysis of the extracts from Jurkat cells using Chk2 (epitope around residue 68) antibody (Line 1 and 2) and Chk2 (phospho-Thr68) antibody (Line 3 and 4).



Immunohistochemical analysis of paraffin-embedded human breast carcinoma tissue using Chk2 (epitope around residue 68) antibody (abx012850).

Rabbit polyclonal antibody against Chk2 protein. Immunogen region is N-terminal.

**Target:** Serine/threonine-Protein Kinase Chk2 (CHK2)

**Clonality:** Polyclonal

**Reactivity:** Human, Mouse, Rat

**Tested Applications:** ELISA, WB, IHC

**Host:** Rabbit

**Recommended dilutions:** WB: 1/500 - 1/3000, IHC: 1/50 - 1/100, ELISA: 1/10000. Optimal dilutions/concentrations should be determined by the end user.

**Conjugation:** Unconjugated

**Immunogen:** The antiserum was produced against synthesized non-phosphopeptide derived from human Chk2 around the phosphorylation site of threonine 68.

**Isotype:** IgG

**Form:** Liquid

**Purification:** Purified from rabbit antiserum by affinity chromatography using epitope-specific immunogen.

# Datasheet

Version: 4.0.0

Revision date: 15 Aug 2025



<b>Storage:</b>	Aliquot and store at -20°C. Avoid repeated freeze/thaw cycles.
<b>UniProt Primary AC:</b>	O96017 ( <a href="#">UniProt</a> , <a href="#">ExPASy</a> )
<b>KEGG:</b>	hsa:11200
<b>String:</b>	<a href="#">9606.ENSP00000372023</a>
<b>Sequence:</b>	CSLETVSTQELYSI
<b>Buffer:</b>	PBS (without Mg <sup>2+</sup> and Ca <sup>2+</sup> ), pH 7.4, 150 mM NaCl, 0.02% sodium azide, 50% glycerol.
<b>Concentration:</b>	1 mg/ml
<b>Note:</b>	THIS PRODUCT IS FOR RESEARCH USE ONLY. NOT FOR USE IN DIAGNOSTIC, THERAPEUTIC OR COSMETIC PROCEDURES. NOT FOR HUMAN OR ANIMAL CONSUMPTION.

For Reference Only