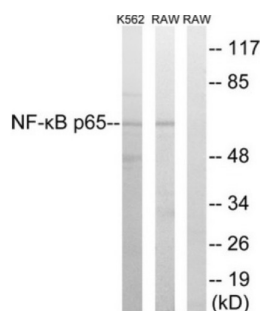
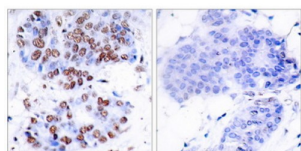


NFκB p65 Antibody

Catalogue No.: abx012874



Western blot analysis of extracts from K562 cells and Raw264.7 cells, using NF-kappaB p65 Antibody (epitope around residue 276). The lane on the right is blocked with the synthesized peptide.



Immunohistochemistry analysis of paraffin-embedded human breast carcinoma tissue, using NF-kappaB p65 Antibody (epitope around residue 276). The picture on the right is blocked with the synthesized peptide.

Rabbit polyclonal antibody against NF- kappa B p65 protein. Immunogen region is Internal.

Target: NFκB p65

Clonality: Polyclonal

Reactivity: Human, Mouse, Rat

Tested Applications: ELISA, WB, IHC, IP

Host: Rabbit

Recommended dilutions: ELISA: 1/10000, WB: 1/500 - 1/3000, IHC: 1/50 - 1/100. Optimal dilutions/concentrations should be determined by the end user.

Conjugation: Unconjugated

Immunogen: The antiserum was produced against synthesized non-phosphopeptide derived from human NF-kappa B p65 around the phosphorylation site of Serine 276.

Isotype: IgG

Form: Liquid

Purification: Purified from rabbit antiserum by affinity chromatography using epitope-specific immunogen.

Datasheet

Version: 6.0.0
Revision date: 24 Jun 2025



Storage:	Aliquot and store at -20°C. Avoid repeated freeze/thaw cycles.
UniProt Primary AC:	Q04206 (UniProt , ExPASy)
Sequence:	CMQLRRPSDRELSE
Buffer:	PBS (without Mg^{2+} and Ca^{2+}), pH 7.4, 150 mM NaCl, 0.02% sodium azide, 50% glycerol.
Specificity:	Detects endogenous levels of NF- κ B p65 protein around Serine 276.
Concentration:	1 mg/ml
Note:	THIS PRODUCT IS FOR RESEARCH USE ONLY. NOT FOR USE IN DIAGNOSTIC, THERAPEUTIC OR COSMETIC PROCEDURES. NOT FOR HUMAN OR ANIMAL CONSUMPTION.

For Reference Only