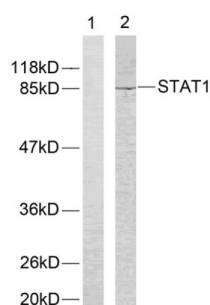
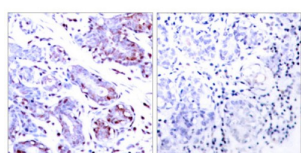


Signal Transducer And Activator of Transcription 1 (STAT1) Antibody

Catalogue No.: abx012882



Western blot analysis of extracts from COLO205 cells using STAT1 (epitope around residue 701) antibody (abx012882). The lane on the left is treated with peptide.



Immunohistochemical analysis of paraffin-embedded human breast carcinoma tissue using STAT1 (epitope around residue 701) antibody (abx012882). The image on the right is treated with peptide.

Rabbit polyclonal antibody against STAT1 protein. Immunogen region is C-terminal.

Target:	Signal Transducer And Activator of Transcription 1 (STAT1)
Clonality:	Polyclonal
Reactivity:	Human, Mouse, Rat
Tested Applications:	ELISA, WB, IHC, IF/ICC, IP
Host:	Rabbit
Recommended dilutions:	ELISA: 1/10000, WB: 1/500 - 1/3000, IHC: 1/50 - 1/100, IF/ICC: 1/100 - 1/500. Optimal dilutions/concentrations should be determined by the end user.
Conjugation:	Unconjugated
Immunogen:	The antiserum was produced against synthesized non-phosphopeptide derived from human STAT1 around the phosphorylation site of tyrosine 701.
Isotype:	IgG
Form:	Liquid
Purification:	Purified from rabbit antiserum by affinity chromatography using epitope-specific immunogen.

Datasheet

Version: 4.0.0

Revision date: 15 Aug 2025



Storage:	Aliquot and store at -20°C. Avoid repeated freeze/thaw cycles.
UniProt Primary AC:	P42224 (UniProt , ExPASy)
Sequence:	CGPKGTGYIKTELI
Buffer:	PBS (without Mg^{2+} and Ca^{2+}), pH 7.4, 150 mM NaCl, 0.02% sodium azide, 50% glycerol.
Specificity:	Detects endogenous levels of total STAT1 protein.
Concentration:	1 mg/ml
Note:	THIS PRODUCT IS FOR RESEARCH USE ONLY. NOT FOR USE IN DIAGNOSTIC, THERAPEUTIC OR COSMETIC PROCEDURES. NOT FOR HUMAN OR ANIMAL CONSUMPTION.

For Reference Only