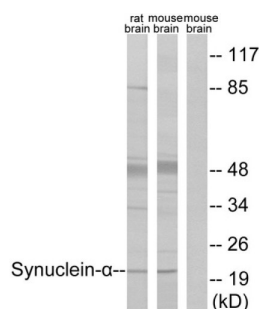


Alpha Synuclein (SNCA) Antibody

Catalogue No.: abx012884



Western blot analysis of extracts from rat brain and mouse brain, using Synuclein-alpha antibody. The lane on the right is treated with the synthesized peptide.

Rabbit polyclonal antibody against Synuclein alpha protein. Immunogen region is C-terminal.

Target:	Alpha Synuclein (SNCA)
Clonality:	Polyclonal
Reactivity:	Human, Mouse, Rat
Tested Applications:	ELISA, WB
Host:	Rabbit
Recommended dilutions:	ELISA: 1/40000, WB: 1/500 - 1/3000. Optimal dilutions/concentrations should be determined by the end user.
Conjugation:	Unconjugated
Immunogen:	The antiserum was produced against synthesized non-phosphopeptide derived from human Synuclein alpha around the phosphorylation site of tyrosine 125 (E-A-Y ^P -E-M).
Isotype:	IgG
Form:	Liquid
Purification:	Purified from rabbit antiserum by affinity chromatography using epitope-specific immunogen.
Storage:	Aliquot and store at -20°C. Avoid repeated freeze/thaw cycles.
UniProt Primary AC:	P37840 (UniProt , ExPASy)
Buffer:	PBS (without Mg ²⁺ and Ca ²⁺), pH 7.4, 150 mM NaCl, 0.02% sodium azide, 50% glycerol.
Concentration:	1 mg/ml

Datasheet

Version: 3.0.0

Revision date: 15 Mar 2025



Note:

THIS PRODUCT IS FOR RESEARCH USE ONLY. NOT FOR USE IN DIAGNOSTIC, THERAPEUTIC OR COSMETIC PROCEDURES. NOT FOR HUMAN OR ANIMAL CONSUMPTION.

For Reference Only