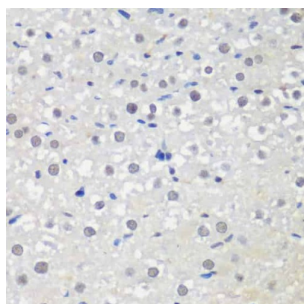
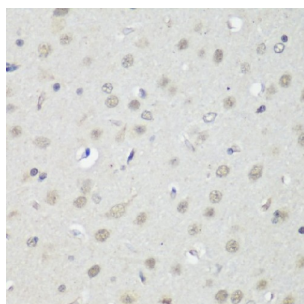


## Transcriptional Repressor CTCF (CTCF) Antibody

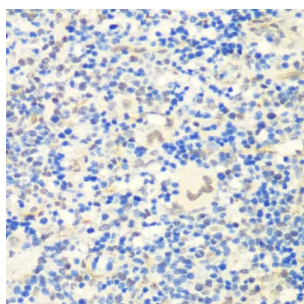
Catalogue No.: abx001047



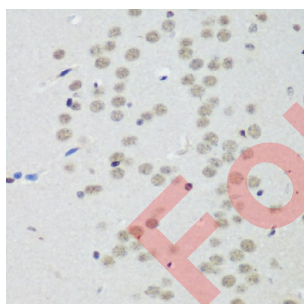
Immunohistochemistry of paraffin-embedded Rat liver using CTCF Antibody (1/200 dilution, 40x lens).



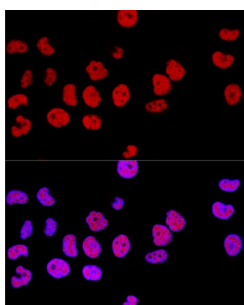
Immunohistochemistry of paraffin-embedded Rat brain using CTCF Antibody (1/200 dilution, 40x lens).



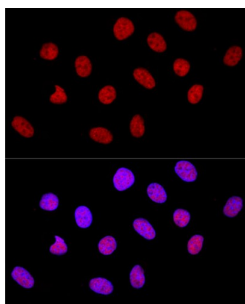
Immunohistochemistry of paraffin-embedded Rat spleen using CTCF Antibody (1/200 dilution, 40x lens).



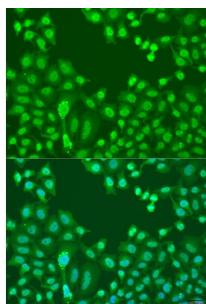
Immunohistochemistry of paraffin-embedded Mouse brain using CTCF Antibody (1/200 dilution, 40x lens).



Confocal immunofluorescence analysis of HeLa cells using CTCF Antibody (1/100 dilution). Blue: DAPI for nuclear staining.



Confocal immunofluorescence analysis of U-2 OS cells using CTCF Antibody (1/100 dilution). Blue: DAPI for nuclear staining.



Immunofluorescence analysis of U2OS cells using CTCF Antibody (1/100 dilution). Blue: DAPI for nuclear staining.

CTCF Antibody is a Rabbit Polyclonal antibody against CTCF. This gene is a member of the BORIS + CTCF gene family and encodes a transcriptional regulator protein with 11 highly conserved zinc finger (ZF) domains. This nuclear protein is able to use different combinations of the ZF domains to bind different DNA target sequences and proteins. Depending upon the context of the site, the protein can bind a histone acetyltransferase (HAT)-containing complex and function as a transcriptional activator or bind a histone deacetylase (HDAC)-containing complex and function as a transcriptional repressor. If the protein is bound to a transcriptional insulator element, it can block communication between enhancers and upstream promoters, thereby regulating imprinted expression. Mutations in this gene have been associated with invasive breast cancers, prostate cancers, and Wilms' tumors. Alternatively spliced transcript variants encoding different isoforms have been found for this gene.

**Target:** Transcriptional Repressor CTCF (CTCF)

**Clonality:** Polyclonal

**Reactivity:** Human, Mouse, Rat

**Tested Applications:** IHC, IF/ICC

**Host:** Rabbit

**Recommended dilutions:** IHC-P: 1/50 - 1/200, IF/ICC: 1/50 - 1/200. Not tested in IHC-F. Optimal dilutions/concentrations should be determined by the end user.

**Conjugation:** Unconjugated

**Immunogen:** Recombinant fusion protein corresponding to human CTCF

**Isotype:** IgG

# Datasheet

Version: 4.0.0

Revision date: 05 Mar 2025



<b>Form:</b>	Liquid
<b>Purification:</b>	Purified by affinity chromatography.
<b>Storage:</b>	Aliquot and store at -20°C. Avoid repeated freeze/thaw cycles.
<b>UniProt Primary AC:</b>	P49711 ( <a href="#">UniProt</a> , <a href="#">ExPASy</a> )
<b>Gene Symbol:</b>	CTCF
<b>GeneID:</b>	<a href="#">10664</a>
<b>NCBI Accession:</b>	NP_006556.1
<b>KEGG:</b>	hsa:10664
<b>String:</b>	<a href="#">9606.ENSP00000264010</a>
<b>Buffer:</b>	PBS, pH 7.3, containing 0.02% sodium azide, 50% glycerol.
<b>Concentration:</b>	1 mg/ml
<b>Note:</b>	THIS PRODUCT IS FOR RESEARCH USE ONLY. NOT FOR USE IN DIAGNOSTIC, THERAPEUTIC OR COSMETIC PROCEDURES. NOT FOR HUMAN OR ANIMAL CONSUMPTION.