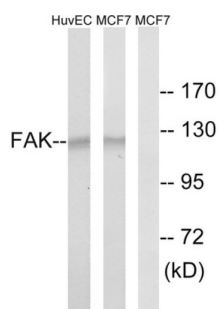
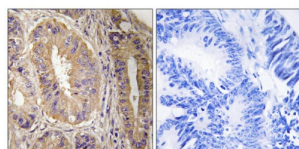


Protein Tyrosine Kinase 2 Beta (PTK2) Antibody

Catalogue No.: abx012896



Western blot analysis of extracts from HUVEC cells and MCF-7 cells, using FAK (epitope around residue 843) antibody.



Immunohistochemistry analysis of paraffin-embedded human colon carcinoma tissue, using FAK (epitope around residue 843) antibody.

Rabbit polyclonal antibody against FAK protein. Immunogen region is C-terminal.

| | |
|-------------------------------|--|
| Target: | Protein Tyrosine Kinase 2 Beta (PTK2) |
| Clonality: | Polyclonal |
| Reactivity: | Human, Mouse, Rat |
| Tested Applications: | ELISA, WB, IHC |
| Host: | Rabbit |
| Recommended dilutions: | WB: 1/500 - 1/3000, IHC: 1/50 - 1/100, ELISA: 1/40000. Optimal dilutions/concentrations should be determined by the end user. |
| Conjugation: | Unconjugated |
| Immunogen: | The antiserum was produced against synthesized non-phosphopeptide derived from human FAK around the phosphorylation site of residue 843. |
| Isotype: | IgG |
| Form: | Liquid |
| Purification: | Purified from rabbit antiserum by affinity chromatography using epitope-specific immunogen. |

Datasheet

Version: 2.0.0

Revision date: 18 Mar 2025



Storage: Aliquot and store at -20°C. Avoid repeated freeze/thaw cycles.

UniProt Primary AC: Q05397 ([UniProt](#), [ExPASy](#))

KEGG: hsa:5747

String: [9606.ENSP00000341189](#)

Enzyme Commission Number: EC 2.7.10.2

Sequence: CDVRLSRGSIDRED

Buffer: PBS (without Mg^{2+} and Ca^{2+}), pH 7.4, 150 mM NaCl, 0.02% sodium azide, 50% glycerol.

Concentration: 1 mg/ml

Note: THIS PRODUCT IS FOR RESEARCH USE ONLY. NOT FOR USE IN DIAGNOSTIC, THERAPEUTIC OR COSMETIC PROCEDURES. NOT FOR HUMAN OR ANIMAL CONSUMPTION.

For Reference Only