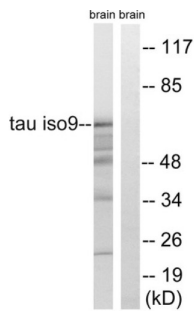


## Microtubule-Associated Protein Tau (MAPT) Antibody

Catalogue No.: abx012907



Western blot analysis of extracts from rat brain cells, using Tau (epitope around residue 717/400) antibody.

Rabbit polyclonal antibody against Tau protein. Immunogen region is Internal.

<b>Target:</b>	Microtubule-Associated Protein Tau (MAPT)
<b>Clonality:</b>	Polyclonal
<b>Reactivity:</b>	Human, Mouse, Rat
<b>Tested Applications:</b>	ELISA, WB
<b>Host:</b>	Rabbit
<b>Recommended dilutions:</b>	WB: 1/500 - 1/3000, ELISA: 1/10000. Optimal dilutions/concentrations should be determined by the end user.
<b>Conjugation:</b>	Unconjugated
<b>Immunogen:</b>	The antiserum was produced against synthesized non-phosphopeptide derived from human Tau around the phosphorylation site of serine 717/400 (V-V-SP-G-D).
<b>Isotype:</b>	IgG
<b>Form:</b>	Liquid
<b>Purification:</b>	Purified from rabbit antiserum by affinity chromatography using epitope-specific immunogen.
<b>Storage:</b>	Aliquot and store at -20°C. Avoid repeated freeze/thaw cycles.
<b>UniProt Primary AC:</b>	P10636 ( <a href="#">UniProt</a> , <a href="#">ExpASY</a> )
<b>Gene Symbol:</b>	MAPT
<b>GeneID:</b>	<a href="#">4137</a>

# Datasheet

Version: 1.0.0  
Revision date: 31 Oct 2024



<b>OMIM:</b>	<a href="#">157140</a>
<b>HGNC:</b>	6893
<b>KEGG:</b>	hsa:4137
<b>Ensembl:</b>	ENSG00000186868
<b>String:</b>	<a href="#">9606.ENSP00000340820</a>
<b>Buffer:</b>	PBS (without Mg <sup>2+</sup> and Ca <sup>2+</sup> ), pH 7.4, 150 mM NaCl, 0.02% sodium azide, 50% glycerol.
<b>Concentration:</b>	1 mg/ml
<b>Note:</b>	This product is for research use only.

For Reference Only