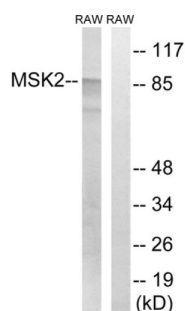


Ribosomal Protein S6 Kinase Alpha-4 (RPS6KA4) Antibody

Catalogue No.: abx012926



Western blot analysis of extracts from RAW264.7 cells, treated with UV (5mins), using MSK2 (epitope around residue 568) antibody.

Rabbit polyclonal antibody against MSK2 protein. Immunogen region is Internal.

Target:	Ribosomal Protein S6 Kinase Alpha-4 (RPS6KA4)
Clonality:	Polyclonal
Reactivity:	Human, Mouse
Tested Applications:	ELISA, WB
Host:	Rabbit
Recommended dilutions:	WB: 1/500 - 1/3000, ELISA: 1/5000. Optimal dilutions/concentrations should be determined by the end user.
Conjugation:	Unconjugated
Immunogen:	The antiserum was produced against synthesized non-phosphopeptide derived from human MSK2 around the phosphorylation site of threonine 568 (M-Q-TP-P-C).
Isotype:	IgG
Form:	Liquid
Purification:	Purified from rabbit antiserum by affinity chromatography using epitope-specific immunogen.
Storage:	Aliquot and store at -20°C. Avoid repeated freeze/thaw cycles.
UniProt Primary AC:	O75676 (UniProt , ExPASy)
KEGG:	hsa:8986
String:	9606.ENSP00000333896

Datasheet

Version: 3.0.0

Revision date: 02 Aug 2025



Enzyme Commission Number: EC 2.7.11.1

Buffer: PBS (without Mg^{2+} and Ca^{2+}), pH 7.4, 150 mM NaCl, 0.02% sodium azide, 50% glycerol.

Concentration: 1 mg/ml

Note: THIS PRODUCT IS FOR RESEARCH USE ONLY. NOT FOR USE IN DIAGNOSTIC, THERAPEUTIC OR COSMETIC PROCEDURES. NOT FOR HUMAN OR ANIMAL CONSUMPTION.

For Reference Only