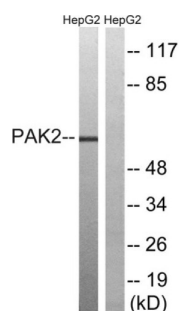


P21 Protein Activated Kinase 2 (PAK2) Antibody

Catalogue No.: abx012930



Western blot analysis of extracts from HepG2 cells, treated with serum (20%, 15mins), using PAK2 (epitope around residue 192) antibody.

Rabbit polyclonal antibody against PAK2 protein. Immunogen region is Internal.

Target:	P21 Protein Activated Kinase 2 (PAK2)
Clonality:	Polyclonal
Reactivity:	Human, Mouse, Rat
Tested Applications:	ELISA, WB
Host:	Rabbit
Recommended dilutions:	WB: 1/500 - 1/3000, ELISA: 1/5000. Optimal dilutions/concentrations should be determined by the end user.
Conjugation:	Unconjugated
Immunogen:	The antiserum was produced against synthesized non-phosphopeptide derived from human PAK2 around the phosphorylation site of serine 192 (T-K-SP-I-Y).
Isotype:	IgG
Form:	Liquid
Purification:	Purified from rabbit antiserum by affinity chromatography using epitope-specific immunogen.
Storage:	Aliquot and store at -20°C. Avoid repeated freeze/thaw cycles.
UniProt Primary AC:	Q13177 (UniProt , ExPASy)
KEGG:	hsa:5062
String:	9606.ENSP00000314067

Datasheet

Version: 4.0.0

Revision date: 27 Jun 2025



Enzyme Commission Number: EC 2.7.11.1

Buffer: PBS (without Mg^{2+} and Ca^{2+}), pH 7.4, 150 mM NaCl, 0.02% sodium azide, 50% glycerol.

Concentration: 1 mg/ml

Note: THIS PRODUCT IS FOR RESEARCH USE ONLY. NOT FOR USE IN DIAGNOSTIC, THERAPEUTIC OR COSMETIC PROCEDURES. NOT FOR HUMAN OR ANIMAL CONSUMPTION.

For Reference Only