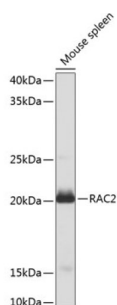
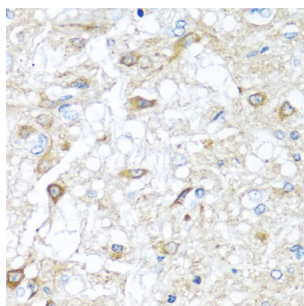


Ras-Related C3 Botulinum Toxin Substrate 2 (RAC2) Antibody

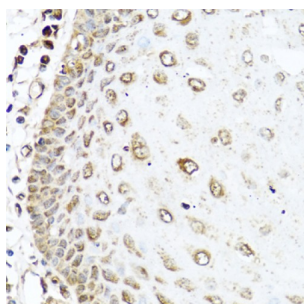
Catalogue No.: abx001053



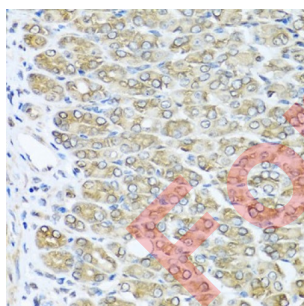
Western blot analysis of extracts of Mouse spleen using RAC2 Antibody (1/1000 dilution).



Immunohistochemistry of paraffin-embedded Rat brain using RAC2 Antibody (1/100 dilution, 40x lens).



Immunohistochemistry of paraffin-embedded Human esophagus using RAC2 Antibody (1/100 dilution, 40x lens).



Immunohistochemistry of paraffin-embedded Mouse stomach using RAC2 Antibody (1/100 dilution, 40x lens).

RAC2 Antibody is a Rabbit Polyclonal antibody against RAC2. This gene encodes a member of the Ras superfamily of small guanosine triphosphate (GTP)-metabolizing proteins. The encoded protein localizes to the plasma membrane, where it regulates diverse processes, such as secretion, phagocytosis, and cell polarization. Activity of this protein is also involved in the generation of reactive oxygen species. Mutations in this gene are associated with neutrophil immunodeficiency syndrome. There is a pseudogene for this gene on chromosome 6.

Target:**Ras-Related C3 Botulinum Toxin Substrate 2 (RAC2)**

Datasheet

Version: 5.0.0
Revision date: 05 Mar 2025



Clonality:	Polyclonal
Reactivity:	Human, Mouse, Rat
Tested Applications:	WB, IHC
Host:	Rabbit
Recommended dilutions:	WB: 1/500 - 1/2000, IHC-P: 1/50 - 1/100. Not tested in IHC-F. Optimal dilutions/concentrations should be determined by the end user.
Conjugation:	Unconjugated
Immunogen:	Recombinant fusion protein corresponding to human RAC2
Isotype:	IgG
Form:	Liquid
Purification:	Purified by affinity chromatography.
Storage:	Aliquot and store at -20°C. Avoid repeated freeze/thaw cycles.
UniProt Primary AC:	P15153 (UniProt , ExPASy)
Gene Symbol:	RAC2
GeneID:	5880
NCBI Accession:	NP_002863.1
KEGG:	hsa:5880
String:	9606.ENSP00000249071
Molecular Weight:	Calculated MW: 21 kDa Observed MW: 21 kDa
Buffer:	PBS, pH 7.3, containing 0.02% sodium azide, 50% glycerol.
Concentration:	1 mg/ml
Note:	THIS PRODUCT IS FOR RESEARCH USE ONLY. NOT FOR USE IN DIAGNOSTIC, THERAPEUTIC OR COSMETIC PROCEDURES. NOT FOR HUMAN OR ANIMAL CONSUMPTION.