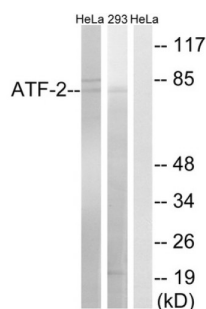


## Cyclic AMP-Dependent Transcription Factor ATF-2 (ATF2) Antibody

Catalogue No.: abx012966



Western blot analysis of extracts from HeLa cells and 293 cells, using ATF2 (epitope around residue 472) antibody.

Rabbit polyclonal antibody against ATF2 protein. Immunogen region is C-terminal.

<b>Target:</b>	Cyclic AMP-Dependent Transcription Factor ATF-2 (ATF2)
<b>Clonality:</b>	Polyclonal
<b>Reactivity:</b>	Human, Mouse, Rat
<b>Tested Applications:</b>	ELISA, WB
<b>Host:</b>	Rabbit
<b>Recommended dilutions:</b>	WB: 1/500 - 1/3000, ELISA: 1/20000. Optimal dilutions/concentrations should be determined by the end user.
<b>Conjugation:</b>	Unconjugated
<b>Immunogen:</b>	The antiserum was produced against synthesized non-phosphopeptide derived from human ATF-2 around the phosphorylation site of serine 472 (A-L-SP-Q-I).
<b>Isotype:</b>	IgG
<b>Form:</b>	Liquid
<b>Purification:</b>	Purified from rabbit antiserum by affinity chromatography using epitope-specific immunogen.
<b>Storage:</b>	Aliquot and store at -20°C. Avoid repeated freeze/thaw cycles.
<b>UniProt Primary AC:</b>	P15336 ( <a href="#">UniProt</a> , <a href="#">ExPASy</a> )
<b>Buffer:</b>	PBS (without $Mg^{2+}$ and $Ca^{2+}$ ), pH 7.4, 150 mM NaCl, 0.02% sodium azide, 50% glycerol.
<b>Concentration:</b>	1 mg/ml

# Datasheet

Version: 2.0.0

Revision date: 10 Jun 2025



**Note:**

THIS PRODUCT IS FOR RESEARCH USE ONLY. NOT FOR USE IN DIAGNOSTIC, THERAPEUTIC OR COSMETIC PROCEDURES. NOT FOR HUMAN OR ANIMAL CONSUMPTION.

For Reference Only