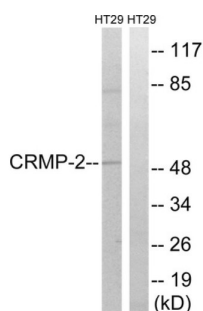
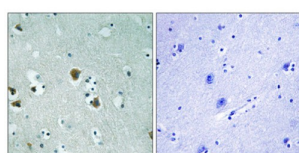


Dihydropyrimidinase-Related Protein 2 (DPYSL2) Antibody

Catalogue No.: abx012972



Western blot analysis of extracts from HT-29 cells, treated with heat shock, using CRMP2 (epitope around residue 509) antibody.



Immunohistochemistry analysis of paraffin-embedded human brain tissue using CRMP2 (epitope around residue 509) antibody.

Rabbit polyclonal antibody against CRMP2 protein. Immunogen region is C-terminal.

Target: Dihydropyrimidinase-Related Protein 2 (DPYSL2)

Clonality: Polyclonal

Reactivity: Human, Mouse, Rat

Tested Applications: ELISA, WB, IHC

Host: Rabbit

Recommended dilutions: WB: 1/500 - 1/3000, IHC: 1/50 - 1/100, ELISA: 1/20000. Optimal dilutions/concentrations should be determined by the end user.

Conjugation: Unconjugated

Immunogen: The antiserum was produced against synthesized non-phosphopeptide derived from human CRMP2 around the phosphorylation site of threonine 509 (S-V-TP-P-K).

Isotype: IgG

Form: Liquid

Purification: Purified from rabbit antiserum by affinity chromatography using epitope-specific immunogen.

Datasheet

Version: 2.0.0

Revision date: 08 Oct 2025



Storage:	Aliquot and store at -20°C. Avoid repeated freeze/thaw cycles.
UniProt Primary AC:	Q16555 (UniProt , ExPASy)
KEGG:	hsa:1808
String:	9606.ENSP00000309539
Sequence:	CEVSVTPKTVTP
Buffer:	PBS (without Mg ²⁺ and Ca ²⁺), pH 7.4, 150 mM NaCl, 0.02% sodium azide, 50% glycerol.
Concentration:	1 mg/ml
Note:	THIS PRODUCT IS FOR RESEARCH USE ONLY. NOT FOR USE IN DIAGNOSTIC, THERAPEUTIC OR COSMETIC PROCEDURES. NOT FOR HUMAN OR ANIMAL CONSUMPTION.

For Reference Only