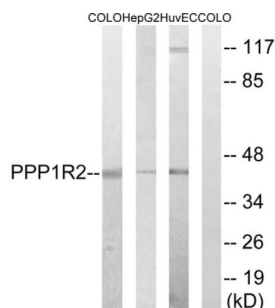


# Protein Phosphatase 1 Regulatory Inhibitor Subunit 2 (PPP1R2) Antibody

Catalogue No.: abx012987



Western blot analysis of extracts from COLO cells, HepG2 cells and HUVEC cells, using PPP1R2 (epitope around residue 44) antibody.

Rabbit polyclonal antibody against PPP1R2 protein. Immunogen region is N-terminal.

<b>Target:</b>	Protein Phosphatase 1 Regulatory Inhibitor Subunit 2 (PPP1R2)
<b>Clonality:</b>	Polyclonal
<b>Reactivity:</b>	Human, Mouse, Rat
<b>Tested Applications:</b>	ELISA, WB
<b>Host:</b>	Rabbit
<b>Recommended dilutions:</b>	WB: 1/500 - 1/3000, ELISA: 1/40000. Optimal dilutions/concentrations should be determined by the end user.
<b>Conjugation:</b>	Unconjugated
<b>Immunogen:</b>	The antiserum was produced against synthesized non-phosphopeptide derived from human PPP1R2 around the phosphorylation site of residue 44.
<b>Isotype:</b>	IgG
<b>Form:</b>	Liquid
<b>Purification:</b>	Purified from rabbit antiserum by affinity chromatography using epitope-specific immunogen.
<b>Storage:</b>	Aliquot and store at -20°C. Avoid repeated freeze/thaw cycles.
<b>UniProt Primary AC:</b>	P41236 ( <a href="#">UniProt</a> , <a href="#">ExPASy</a> )
<b>KEGG:</b>	hsa:5504

# Datasheet

Version: 5.0.0

Revision date: 13 Aug 2025



**String:** [9606.ENSF00000484580](#)

**Buffer:** PBS (without  $Mg^{2+}$  and  $Ca^{2+}$ ), pH 7.4, 150 mM NaCl, 0.02% sodium azide, 50% glycerol.

**Concentration:** 1 mg/ml

**Note:** THIS PRODUCT IS FOR RESEARCH USE ONLY. NOT FOR USE IN DIAGNOSTIC, THERAPEUTIC OR COSMETIC PROCEDURES. NOT FOR HUMAN OR ANIMAL CONSUMPTION.

For Reference Only