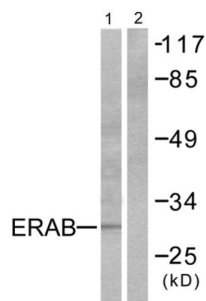
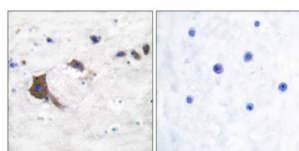


Endoplasmic Reticulum-Associated Amyloid Beta-Peptide-Binding Protein (ERAB) Antibody

Catalogue No.: abx013069



Western blot analysis of extracts from LOVO cells, using ERAB antibody.



Immunohistochemical analysis of paraffin-embedded human brain tissue using ERAB antibody.

Rabbit polyclonal antibody against ERAB protein. Immunogen region is Internal.

Target:	Endoplasmic Reticulum-Associated Amyloid Beta-Peptide-Binding Protein (ERAB)
Clonality:	Polyclonal
Reactivity:	Human, Mouse, Rat
Tested Applications:	ELISA, WB, IHC
Host:	Rabbit
Recommended dilutions:	WB: 1/500 - 1/3000, IHC: 1/50 - 1/100, ELISA: 1/5000. Optimal dilutions/concentrations should be determined by the end user.
Conjugation:	Unconjugated
Immunogen:	The antiserum was produced against synthesized peptide derived from internal of human ERAB.
Isotype:	IgG
Form:	Liquid

Datasheet

Version: 2.0.0

Revision date: 11 Oct 2025



Purification: Purified from rabbit antiserum by affinity chromatography using epitope-specific immunogen.

Storage: Aliquot and store at -20°C. Avoid repeated freeze/thaw cycles.

UniProt Primary AC: Q99714 ([UniProt](#), [ExPASy](#))

Enzyme Commission Number: EC 1.1.1.178, EC 1.1.1.35

Sequence: CEMGQNEPDQGGQ

Buffer: PBS (without Mg^{2+} and Ca^{2+}), pH 7.4, 150 mM NaCl, 0.02% sodium azide, 50% glycerol.

Concentration: 1 mg/ml

Note: THIS PRODUCT IS FOR RESEARCH USE ONLY. NOT FOR USE IN DIAGNOSTIC, THERAPEUTIC OR COSMETIC PROCEDURES. NOT FOR HUMAN OR ANIMAL CONSUMPTION.

For Reference Only