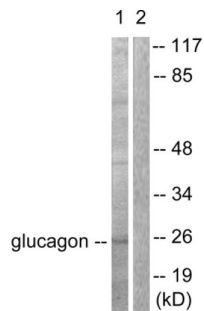
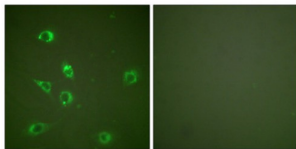


Glucagon (GCG) Antibody

Catalogue No.: abx013090



Western blot analysis of extracts from COS7 cells, using Glucagon antibody (abx013090).



Immunofluorescence analysis of NIH/3T3 cells, using Glucagon antibody (abx013090).

Rabbit polyclonal antibody against Glucagon protein. Immunogen region is Internal.

| | |
|-------------------------------|--|
| Target: | Glucagon (GCG) |
| Clonality: | Polyclonal |
| Reactivity: | Human, Mouse, Rat |
| Tested Applications: | ELISA, WB, IF/ICC |
| Host: | Rabbit |
| Recommended dilutions: | WB: 1/500 - 1/3000, IF/ICC: 1/100 - 1/500, ELISA: 1/5000. Optimal dilutions/concentrations should be determined by the end user. |
| Conjugation: | Unconjugated |
| Immunogen: | The antiserum was produced against synthesized peptide derived from internal of human glucagon. |
| Isotype: | IgG |
| Form: | Liquid |
| Purification: | Purified from rabbit antiserum by affinity chromatography using epitope-specific immunogen. |

Datasheet

Version: 3.0.0
Revision date: 20 Jun 2025



Storage: Aliquot and store at -20°C. Avoid repeated freeze/thaw cycles.

UniProt Primary AC: P01275 ([UniProt](#), [ExPASy](#))

KEGG: hsa:2641

String: [9606.ENSP00000387662](#)

Buffer: PBS (without Mg²⁺ and Ca²⁺), pH 7.4, 150 mM NaCl, 0.02% sodium azide, 50% glycerol.

Concentration: 1 mg/ml

Note: THIS PRODUCT IS FOR RESEARCH USE ONLY. NOT FOR USE IN DIAGNOSTIC, THERAPEUTIC OR COSMETIC PROCEDURES. NOT FOR HUMAN OR ANIMAL CONSUMPTION.

For Reference Only