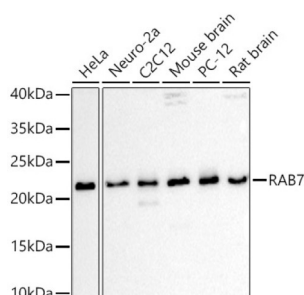


RAB7A, Member RAS Oncogene Family (RAB7A) Antibody

Catalogue No.: abx001068



Western blot analysis of extracts of various cell lines using RAB7 Antibody (1/1000 dilution).

RAB7A Antibody is a Rabbit Polyclonal antibody against RAB7A. RAB family members are small, RAS-related GTP-binding proteins that are important regulators of vesicular transport. Each RAB protein targets multiple proteins that act in exocytic / endocytic pathways. This gene encodes a RAB family member that regulates vesicle traffic in the late endosomes and also from late endosomes to lysosomes. This encoded protein is also involved in the cellular vacuolation of the VacA cytotoxin of *Helicobacter pylori*. Mutations at highly conserved amino acid residues in this gene have caused some forms of Charcot-Marie-Tooth (CMT) type 2 neuropathies.

Target:	RAB7A, Member RAS Oncogene Family (RAB7A)
Clonality:	Polyclonal
Reactivity:	Human, Mouse, Rat
Tested Applications:	WB
Host:	Rabbit
Recommended dilutions:	WB: 1/500 - 1/2000. Optimal dilutions/concentrations should be determined by the end user.
Conjugation:	Unconjugated
Immunogen:	A synthetic peptide corresponding to human RAB7A
Isotype:	IgG
Form:	Liquid
Purification:	Purified by affinity chromatography.
Storage:	Aliquot and store at -20°C. Avoid repeated freeze/thaw cycles.
UniProt Primary AC:	P51149 (UniProt , ExPASy)

Datasheet

Version: 4.0.0

Revision date: 26 Aug 2025



Gene Symbol: RAB7A

GeneID: [7879](#)

NCBI Accession: NP_004628.4

KEGG: hsa:7879

String: [9606.ENSP00000265062](#)

Molecular Weight: Calculated MW: 23 kDa
Observed MW: 23 kDa

Buffer: PBS, pH 7.3, containing 0.05% Proclin-300, 50% glycerol.

Concentration: 1 mg/ml

Note: THIS PRODUCT IS FOR RESEARCH USE ONLY. NOT FOR USE IN DIAGNOSTIC, THERAPEUTIC OR COSMETIC PROCEDURES. NOT FOR HUMAN OR ANIMAL CONSUMPTION.

For Reference Only