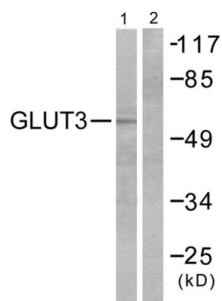
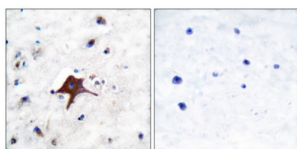


## Solute Carrier Family 2, Facilitated Glucose Transporter Member 3 (SLC2A3) Antibody

Catalogue No.: abx013098



Western blot analysis of extracts from LOVO cells, using GLUT3 antibody (abx013098).



Immunohistochemical analysis of paraffin-embedded human brain tissue, using GLUT3 antibody (abx013098).

Rabbit polyclonal antibody against GLUT3 protein. Immunogen region is C-terminal.

**Target:** Solute Carrier Family 2, Facilitated Glucose Transporter Member 3 (SLC2A3)

**Clonality:** Polyclonal

**Reactivity:** Human

**Tested Applications:** ELISA, WB, IHC

**Host:** Rabbit

**Recommended dilutions:** WB: 1/500 - 1/3000, IHC: 1/50 - 1/100, ELISA: 1/1000. Optimal dilutions/concentrations should be determined by the end user.

**Conjugation:** Unconjugated

**Immunogen:** The antiserum was produced against synthesized peptide derived from C-terminal of human GLUT3.

**Isotype:** IgG

**Form:** Liquid

# Datasheet

Version: 2.0.0  
Revision date: 09 Mar 2025



<b>Purification:</b>	Purified from rabbit antiserum by affinity chromatography using epitope-specific immunogen.
<b>Storage:</b>	Aliquot and store at -20°C. Avoid repeated freeze/thaw cycles.
<b>UniProt Primary AC:</b>	P11169 ( <a href="#">UniProt</a> , <a href="#">ExPASy</a> )
<b>KEGG:</b>	hsa:6515
<b>String:</b>	<a href="#">9606.ENSP00000075120</a>
<b>Sequence:</b>	CEMNSIEPAKETTTNV
<b>Buffer:</b>	PBS (without $Mg^{2+}$ and $Ca^{2+}$ ), pH 7.4, 150 mM NaCl, 0.02% sodium azide, 50% glycerol.
<b>Concentration:</b>	1 mg/ml
<b>Note:</b>	THIS PRODUCT IS FOR RESEARCH USE ONLY. NOT FOR USE IN DIAGNOSTIC, THERAPEUTIC OR COSMETIC PROCEDURES. NOT FOR HUMAN OR ANIMAL CONSUMPTION.

For Reference Only