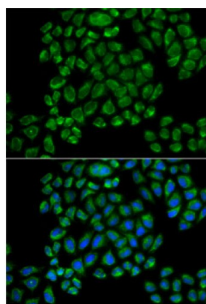


Glutamate Receptor, Ionotropic, AMPA 3 (GRIA3) Antibody

Catalogue No.: abx001073



Immunofluorescence analysis of HeLa cells using GRIA3 Antibody

GRIA3 Antibody is a Rabbit Polyclonal antibody against GRIA3. Glutamate receptors are the predominant excitatory neurotransmitter receptors in the mammalian brain and are activated in a variety of normal neurophysiologic processes. These receptors are heteromeric protein complexes composed of multiple subunits, arranged to form ligand-gated ion channels. The classification of glutamate receptors is based on their activation by different pharmacologic agonists. The subunit encoded by this gene belongs to a family of AMPA (alpha-amino-3-hydroxy-5-methyl-4-isoxazole propionate)-sensitive glutamate receptors, and is subject to RNA editing (AGA->GGA; R->G). Alternative splicing at this locus results in different isoforms, which may vary in their signal transduction properties.

Target:	Glutamate Receptor, Ionotropic, AMPA 3 (GRIA3)
Clonality:	Polyclonal
Reactivity:	Human
Tested Applications:	IF/ICC
Host:	Rabbit
Recommended dilutions:	IF/ICC: 1/50 - 1/100. Optimal dilutions/concentrations should be determined by the end user.
Conjugation:	Unconjugated
Immunogen:	Recombinant fusion protein corresponding to human GRIA3
Isotype:	IgG
Form:	Liquid
Purification:	Purified by affinity chromatography.
Storage:	Aliquot and store at -20°C. Avoid repeated freeze/thaw cycles.
UniProt Primary AC:	P42263 (UniProt , ExPASy)

Datasheet

Version: 5.0.0
Revision date: 22 Jun 2025



Gene Symbol: GRIA3

GeneID: [2892](#)

NCBI Accession: NP_000819.3

KEGG: hsa:2892

String: [9606.ENSP00000481554](#)

Buffer: PBS, pH 7.3, containing 0.02% sodium azide, 50% glycerol.

Concentration: 1 mg/ml

Note: THIS PRODUCT IS FOR RESEARCH USE ONLY. NOT FOR USE IN DIAGNOSTIC, THERAPEUTIC OR COSMETIC PROCEDURES. NOT FOR HUMAN OR ANIMAL CONSUMPTION.

For Reference Only