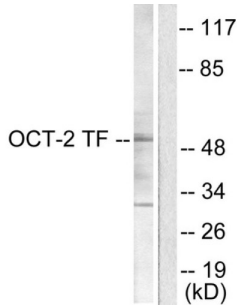
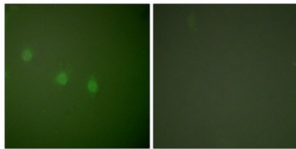


POU Domain, Class 2, Transcription Factor 2 / OCT2 (POU2F2) Antibody

Catalogue No.: abx013159



Western blot analysis of extracts from COS7 cells, using OCT2 antibody (abx013159).



Immunofluorescence analysis of COS7 cells, using OCT2 antibody (abx013159).

Rabbit polyclonal antibody against 37530 protein. Immunogen region is N-terminal.

- Target:** POU Domain, Class 2, Transcription Factor 2 / OCT2 (POU2F2)
- Clonality:** Polyclonal
- Reactivity:** Human, Mouse
- Tested Applications:** ELISA, WB, IF/ICC
- Host:** Rabbit
- Recommended dilutions:** WB: 1/500 - 1/3000, IF/ICC: 1/100 - 1/500, ELISA: 1/5000. Optimal dilutions/concentrations should be determined by the end user.
- Conjugation:** Unconjugated
- Immunogen:** The antiserum was produced against synthesized peptide derived from N-terminal of human OCT2 antibody.
- Isotype:** IgG
- Form:** Liquid

Datasheet

Version: 4.0.0
Revision date: 25 Jul 2025



Purification: Purified from rabbit antiserum by affinity chromatography using epitope-specific immunogen.

Storage: Aliquot and store at -20°C. Avoid repeated freeze/thaw cycles.

UniProt Primary AC: P09086 ([UniProt](#), [ExPASy](#))

Gene Symbol: POU2F2

GeneID: [5452](#)

OMIM: [164176](#)

HGNC: 9213

KEGG: hsa:5452

Ensembl: ENSG00000028277

Buffer: PBS (without Mg²⁺ and Ca²⁺), pH 7.4, 150 mM NaCl, 0.02% sodium azide, 50% glycerol.

Concentration: 1 mg/ml

Note: THIS PRODUCT IS FOR RESEARCH USE ONLY. NOT FOR USE IN DIAGNOSTIC, THERAPEUTIC OR COSMETIC PROCEDURES. NOT FOR HUMAN OR ANIMAL CONSUMPTION.

For Reference Only