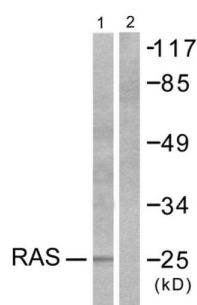
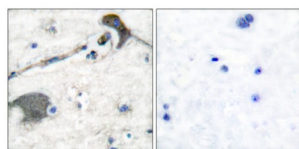


RASH / RASK / RASN Antibody

Catalogue No.: abx013185



Western blot analysis of extracts from HeLa cells, using RASH/RASK/RASN antibody (abx013185).



Immunohistochemical analysis of paraffin-embedded human brain tissue, using RASH/RASK/RASN antibody (abx013185).

Rabbit polyclonal antibody against RASH/RASK/RASN protein. Immunogen region is N-terminal.

Target:	RASH/RASK/RASN
Clonality:	Polyclonal
Reactivity:	Human, Mouse, Rat
Tested Applications:	ELISA, WB, IHC
Host:	Rabbit
Recommended dilutions:	WB: 1/500 - 1/3000, IHC: 1/50 - 1/100, ELISA: 1/20000. Optimal dilutions/concentrations should be determined by the end user.
Conjugation:	Unconjugated
Immunogen:	The antiserum was produced against synthesized peptide derived from N-terminal of human RASH/RASK/RASN antibody.
Isotype:	IgG
Form:	Liquid
Purification:	Purified from rabbit antiserum by affinity chromatography using epitope-specific immunogen.

Datasheet

Version: 4.0.0

Revision date: 01 Sep 2025



Storage: Aliquot and store at -20°C. Avoid repeated freeze/thaw cycles.

UniProt Primary AC: P01111 ([UniProt](#), [ExPASy](#)) P01112 ([UniProt](#), [ExPASy](#)) P01116 ([UniProt](#), [ExPASy](#))

Sequence: CHFVDEYDPTIEDSYRKQV

Buffer: PBS (without Mg^{2+} and Ca^{2+}), pH 7.4, 150 mM NaCl, 0.02% sodium azide, 50% glycerol.

Concentration: 1 mg/ml

Note: THIS PRODUCT IS FOR RESEARCH USE ONLY. NOT FOR USE IN DIAGNOSTIC, THERAPEUTIC OR COSMETIC PROCEDURES. NOT FOR HUMAN OR ANIMAL CONSUMPTION.

For Reference Only