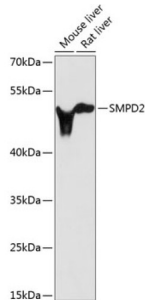


Sphingomyelin Phosphodiesterase 2 (SMPD2) Antibody

Catalogue No.: abx001080



Western blot analysis of various lysates using SMPD2 Antibody at 1/3000 dilution. Secondary antibody: HRP-conjugated Goat anti-Rabbit IgG (H+L) at 1/10000 dilution. Lysates/proteins: 25 µg per lane. Blocking buffer: 3% nonfat dry milk in TBST. Exposure time: 90s.

SMPD2 Antibody is a Rabbit Polyclonal antibody against SMPD2. This gene encodes a protein which was initially identified as a sphingomyelinase based on sequence similarity between bacterial sphingomyelinases and a yeast protein. Subsequent studies showed that its biological function is less likely to be as a sphingomyelinase and instead as a lysophospholipase.

Target:	Sphingomyelin Phosphodiesterase 2 (SMPD2)
Clonality:	Polyclonal
Reactivity:	Mouse, Rat
Tested Applications:	ELISA, WB
Host:	Rabbit
Recommended dilutions:	ELISA: 1 µg/ml, WB: 1/500 - 1/2000. Optimal dilutions/concentrations should be determined by the end user.
Conjugation:	Unconjugated
Immunogen:	Synthetic peptide corresponding to SMPD2. The exact sequence is proprietary.
Isotype:	IgG
Form:	Liquid
Purification:	Purified by affinity chromatography.
Storage:	Aliquot and store at -20°C. Avoid repeated freeze/thaw cycles.
UniProt Primary AC:	O60906 (UniProt , ExpASY)
Gene Symbol:	SMPD2

Datasheet

Version: 5.0.0
Revision date: 22 Aug 2025



GeneID: [6610](#)

NCBI Accession: NP_003071.2

KEGG: hsa:6610

String: [9606.ENSP00000258052](#)

Molecular Weight: Calculated MW: 48 kDa
Observed MW: 50 kDa

Buffer: PBS, pH 7.3, containing 0.01% thimerosal, 50% glycerol.

Concentration: > 0.2 mg/ml

Note: THIS PRODUCT IS FOR RESEARCH USE ONLY. NOT FOR USE IN DIAGNOSTIC, THERAPEUTIC OR COSMETIC PROCEDURES. NOT FOR HUMAN OR ANIMAL CONSUMPTION.

For Reference Only