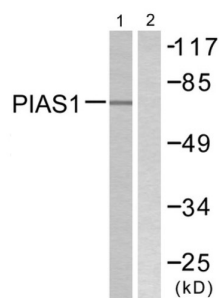
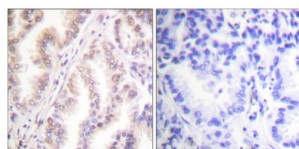


Protein Inhibitor of Activated STAT 1 (PIAS1) Antibody

Catalogue No.: abx013223



Western blot analysis of extracts from MDA-MB-435 cells, using PIAS1 antibody. The right lane is blocked with peptide.



Immunohistochemistry analysis of paraffin-embedded human lung carcinoma tissue using PIAS1 antibody. The right image is blocked with peptide.

Protein Inhibitor of Activated STAT 1 (PIAS1) Antibody is a rabbit polyclonal antibody against PIAS1.

Target: Protein Inhibitor of Activated STAT 1 (PIAS1)

Clonality: Polyclonal

Reactivity: Human, Mouse

Tested Applications: ELISA, WB, IHC

Host: Rabbit

Recommended dilutions: WB: 1/500 - 1/3000, IHC: 1/50 - 1/100, ELISA: 1/10000. Optimal dilutions/concentrations should be determined by the end user.

Conjugation: Unconjugated

Immunogen: The antiserum was produced against synthesized peptide derived from the internal region of human PIAS1.

Isotype: IgG

Form: Liquid

Purification: Purified from rabbit antiserum by affinity chromatography using epitope-specific immunogen.

Datasheet

Version: 4.0.0

Revision date: 07 Jun 2025



Storage:	Aliquot and store at -20°C. Avoid repeated freeze/thaw cycles.
UniProt Primary AC:	O75925 (UniProt , ExPASy)
KEGG:	hsa:8554
String:	9606.ENSP00000249636
Sequence:	CGYAGRNVKHGRKHELLT
Buffer:	PBS (without Mg ²⁺ and Ca ²⁺), pH 7.4, 150 mM NaCl, 0.02% sodium azide, 50% glycerol.
Concentration:	1 mg/ml
Note:	THIS PRODUCT IS FOR RESEARCH USE ONLY. NOT FOR USE IN DIAGNOSTIC, THERAPEUTIC OR COSMETIC PROCEDURES. NOT FOR HUMAN OR ANIMAL CONSUMPTION.

For Reference Only