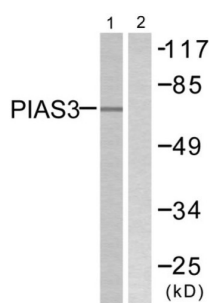
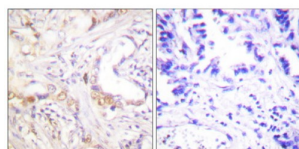


Protein Inhibitor of Activated STAT3 (PIAS3) Antibody

Catalogue No.: abx013225



Western blot analysis of extracts from 293 cells, treated with UV (5mins), using PIAS3 antibody.



Immunohistochemistry analysis of paraffin-embedded human lung carcinoma tissue using PIAS3 antibody.

Rabbit polyclonal antibody against PIAS3 protein. Immunogen region is N-terminal.

Target: Protein Inhibitor of Activated STAT3 (PIAS3)

Clonality: Polyclonal

Reactivity: Human, Mouse, Rat

Tested Applications: ELISA, WB, IHC

Host: Rabbit

Recommended dilutions: WB: 1/500 - 1/3,000, IHC: 1/50 - 1/100, ELISA: 1/10000. Optimal dilutions/concentrations should be determined by the end user.

Conjugation: Unconjugated

Immunogen: The antiserum was produced against synthesized peptide derived from N-terminal of human PIAS3.

Isotype: IgG

Form: Liquid

Purification: Purified from rabbit antiserum by affinity chromatography using epitope-specific immunogen.

Datasheet

Version: 3.0.0

Revision date: 20 Jul 2025



Storage:	Aliquot and store at -20°C. Avoid repeated freeze/thaw cycles.
UniProt Primary AC:	Q9Y6X2 (UniProt , ExPASy)
String:	9606.ENSP00000376765
Sequence:	CFAGRNKSGRKHELLA
Buffer:	PBS (without Mg^{2+} and Ca^{2+}), pH 7.4, 150 mM NaCl, 0.02% sodium azide, 50% glycerol.
Concentration:	1 mg/ml
Note:	THIS PRODUCT IS FOR RESEARCH USE ONLY. NOT FOR USE IN DIAGNOSTIC, THERAPEUTIC OR COSMETIC PROCEDURES. NOT FOR HUMAN OR ANIMAL CONSUMPTION.

For Reference Only