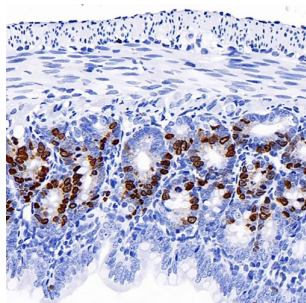
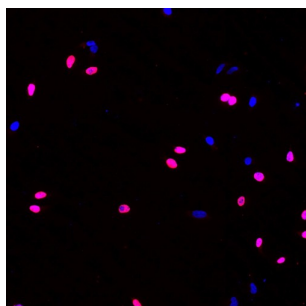


Bromodeoxyuridine (BrdU) Antibody

Catalogue No.: abx000064



Immunohistochemistry analysis of paraffin-embedded mouse jejunum (intraperitoneal injection BrdU every 2 hours for 4 times) using BrdU Monoclonal Antibody (1/300 dilution).



Immunofluorescence analysis of HeLa cells (treated with 0.03mg/ml BrdU for 40 min) using BrdU Monoclonal Antibody (1/100 dilution).

BrdU Antibody is a Mouse Monoclonal antibody against BrdU. The halogenated pyrimidine thymidine analog bromodeoxyuridine (BrdU) is incorporated into newly synthesized DNA strands of S phase cells and is useful for estimating the fraction of cells in S phase. Additionally, the analysis of the uptake of BrdU is a reliable method to quantitate the degree of DNA synthesis. BrdU is also useful for studying sister chromatid exchange and to isolate nascent DNA. UV-induced excision-repair synthesis is one method for incorporating BrdU into cellular DNA. Anti-BrdU antibodies bind to the exposed BrdU in single-stranded DNA after a hydrochloric acid denaturation step or nuclease digestion. Protease antigen recovery is necessary for most tissues or cells fixed with cross-linking agents such as formalin but may decrease the specificity of BrdU immunodetection. The monoclonal antibody Bu20a against BrdU stains BrdU incorporated into the nuclei of a wide range of proliferating cell types including human tumors growing in nude mice and tonsil lymphoid.

Target: Bromodeoxyuridine (BrdU)

Clonality: Monoclonal

Reactivity: Human, Mouse, Rat

Tested Applications: IHC, IF/ICC

Host: Mouse

Recommended dilutions: IHC-P: 1/100 - 1/500, IF/ICC: 1/100 - 1/500. Not tested in IHC-F. Optimal dilutions/concentrations should be determined by the end user.

Conjugation: Unconjugated

Immunogen: KLH conjugated BrdU

Datasheet

Version: 3.0.0

Revision date: 02 May 2025



Isotype:	IgG
Form:	Liquid
Purification:	Purified by affinity chromatography.
Storage:	Aliquot and store at -20°C. Avoid repeated freeze/thaw cycles.
Gene Symbol:	BRDU
Buffer:	PBS, pH 7.4, containing 1% protective protein, 0.02% sodium azide, 50% glycerol.
Concentration:	0.7 mg/ml
Note:	THIS PRODUCT IS FOR RESEARCH USE ONLY. NOT FOR USE IN DIAGNOSTIC, THERAPEUTIC OR COSMETIC PROCEDURES. NOT FOR HUMAN OR ANIMAL CONSUMPTION.

For Reference Only