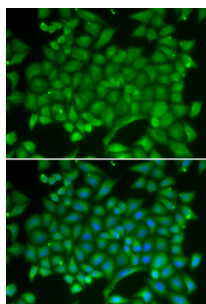


Ras-Related Protein Rab-11A (RAB11A) Antibody

Catalogue No.: abx001081



Immunofluorescence analysis of MCF-7 cells using RAB11A Antibody

RAB11A Antibody is a Rabbit Polyclonal antibody against RAB11A. The protein encoded by this gene belongs to the Rab family of the small GTPase superfamily. It is associated with both constitutive and regulated secretory pathways, and may be involved in protein transport. Two transcript variants encoding different isoforms have been found for this gene.

Target:	Ras-Related Protein Rab-11A (RAB11A)
Clonality:	Polyclonal
Reactivity:	Human, Rat
Tested Applications:	IF/ICC
Host:	Rabbit
Recommended dilutions:	IF/ICC: 1/50 - 1/200. Optimal dilutions/concentrations should be determined by the end user.
Conjugation:	Unconjugated
Immunogen:	Recombinant fusion protein corresponding to human RAB11A
Isotype:	IgG
Form:	Liquid
Purification:	Purified by affinity chromatography.
Storage:	Aliquot and store at -20°C. Avoid repeated freeze/thaw cycles.
UniProt Primary AC:	P62491 (UniProt , ExPASy)
Gene Symbol:	RAB11A

Datasheet

Version: 4.0.0

Revision date: 20 Aug 2025



GeneID: [8766](#)

NCBI Accession: NP_004654.1

KEGG: hsa:8766

String: [9606.ENSP00000261890](#)

Buffer: PBS, pH 7.3, containing 0.02% sodium azide, 50% glycerol.

Concentration: 1 mg/ml

Note: THIS PRODUCT IS FOR RESEARCH USE ONLY. NOT FOR USE IN DIAGNOSTIC, THERAPEUTIC OR COSMETIC PROCEDURES. NOT FOR HUMAN OR ANIMAL CONSUMPTION.

For Reference Only