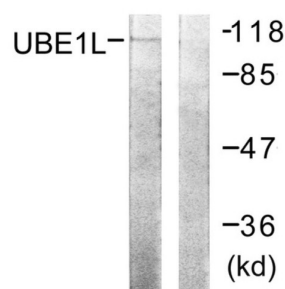
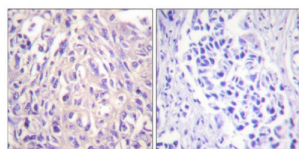


Ubiquitin-Activating Enzyme 7 (UBA7) Antibody

Catalogue No.: abx013244



Western blot analysis of extracts from HeLa cells, using UBE1L antibody.



Immunohistochemistry analysis of paraffin-embedded human breast carcinoma tissue using UBE1L antibody.

Rabbit polyclonal antibody against Ubiquitin-Activating Enzyme 7 (UBA7) protein. Immunogen region is C-terminal.

Target: Ubiquitin-Activating Enzyme 7 (UBA7)

Clonality: Polyclonal

Reactivity: Human

Tested Applications: ELISA, WB, IHC

Host: Rabbit

Recommended dilutions: WB: 1/500 - 1/3000, IHC: 1/50 - 1/100, ELISA: 1/10000. Optimal dilutions/concentrations should be determined by the end user.

Conjugation: Unconjugated

Immunogen: The antiserum was produced against synthesized peptide derived from C-terminal of human UBE1L.

Isotype: IgG

Form: Liquid

Purification: Purified from rabbit antiserum by affinity chromatography using epitope-specific immunogen.

Datasheet

Version: 3.0.0

Revision date: 08 Sep 2025



Storage:	Aliquot and store at -20°C. Avoid repeated freeze/thaw cycles.
UniProt Primary AC:	P41226 (UniProt , ExPASy)
KEGG:	hsa:7318
String:	9606.ENSP00000333266
Sequence:	CEGDDEDTAFPLHYEL
Buffer:	PBS (without Mg ²⁺ and Ca ²⁺), pH 7.4, 150 mM NaCl, 0.02% sodium azide, 50% glycerol.
Concentration:	1 mg/ml
Note:	THIS PRODUCT IS FOR RESEARCH USE ONLY. NOT FOR USE IN DIAGNOSTIC, THERAPEUTIC OR COSMETIC PROCEDURES. NOT FOR HUMAN OR ANIMAL CONSUMPTION.

For Reference Only