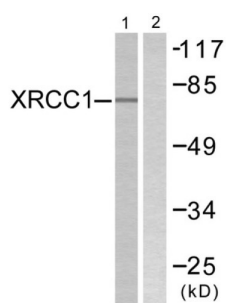
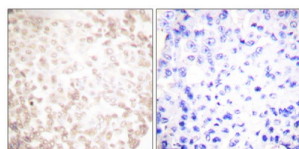


## X-Ray Repair Cross Complementing 1 (XRCC1) Antibody

Catalogue No.: abx013254



Western blot analysis of extracts from Jurkat cells, using XRCC1 antibody.



Immunohistochemistry analysis of paraffin-embedded human lung carcinoma tissue using XRCC1 antibody.

Rabbit polyclonal antibody against XRCC1 protein. Immunogen region is C-terminal.

**Target:** X-Ray Repair Cross Complementing 1 (XRCC1)

**Clonality:** Polyclonal

**Reactivity:** Human, Mouse, Rat

**Tested Applications:** ELISA, WB, IHC

**Host:** Rabbit

**Recommended dilutions:** WB: 1/500 - 1/3000, IHC: 1/50 - 1/100, ELISA: 1/10000. Optimal dilutions/concentrations should be determined by the end user.

**Conjugation:** Unconjugated

**Immunogen:** The antiserum was produced against synthesized peptide derived from C-terminal of human XRCC1.

**Isotype:** IgG

**Form:** Liquid

**Purification:** Purified from rabbit antiserum by affinity chromatography using epitope-specific immunogen.

# Datasheet

Version: 2.0.0

Revision date: 26 Sep 2025



<b>Storage:</b>	Aliquot and store at -20°C. Avoid repeated freeze/thaw cycles.
<b>UniProt Primary AC:</b>	P18887 ( <a href="#">UniProt</a> , <a href="#">ExPASy</a> )
<b>KEGG:</b>	hsa:7515
<b>String:</b>	<a href="#">9606.ENSP00000262887</a>
<b>Sequence:</b>	CGEFPGDERRKLIRYV
<b>Buffer:</b>	PBS (without Mg <sup>2+</sup> and Ca <sup>2+</sup> ), pH 7.4, 150 mM NaCl, 0.02% sodium azide, 50% glycerol.
<b>Concentration:</b>	1 mg/ml
<b>Note:</b>	THIS PRODUCT IS FOR RESEARCH USE ONLY. NOT FOR USE IN DIAGNOSTIC, THERAPEUTIC OR COSMETIC PROCEDURES. NOT FOR HUMAN OR ANIMAL CONSUMPTION.

For Reference Only