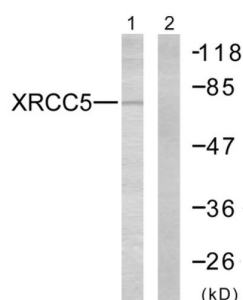
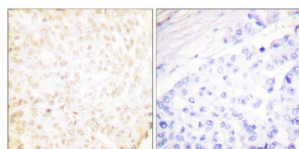


X-Ray Repair Cross Complementing 5 (XRCC5) Antibody

Catalogue No.: abx013258



Western blot analysis of extracts from Jurkat cells, using XRCC5 antibody.



Immunohistochemistry analysis of paraffin-embedded human breast carcinoma tissue, using XRCC5 antibody. The image on the right is treated with synthetic peptide.

Rabbit polyclonal antibody against XRCC5 protein. Immunogen region is C-terminal.

Target:	X-Ray Repair Cross Complementing 5 (XRCC5)
Clonality:	Polyclonal
Reactivity:	Human, Mouse
Tested Applications:	ELISA, WB, IHC
Host:	Rabbit
Recommended dilutions:	ELISA: 1/5000, WB: 1/500 - 1/3000, IHC: 1/50 - 1/100. Optimal dilutions/concentrations should be determined by the end user.
Conjugation:	Unconjugated
Immunogen:	The antiserum was produced against synthesized peptide derived from C-terminal of human XRCC5.
Isotype:	IgG
Form:	Liquid
Purification:	Purified from rabbit antiserum by affinity chromatography using epitope-specific immunogen.

Datasheet

Version: 4.0.0
Revision date: 09 Sep 2025



Storage:	Aliquot and store at -20°C. Avoid repeated freeze/thaw cycles.
UniProt Primary AC:	P13010 (UniProt , ExPASy)
KEGG:	hsa:7520
String:	9606.ENSP00000375978
Enzyme Commission Number:	EC 3.6.1.-
Sequence:	CAVFEEGGDVDDLDMI
Buffer:	PBS (without Mg ²⁺ and Ca ²⁺), pH 7.4, 150 mM NaCl, 0.02% sodium azide, 50% glycerol.
Specificity:	Detects endogenous levels of total XRCC5 protein.
Concentration:	1 mg/ml
Note:	THIS PRODUCT IS FOR RESEARCH USE ONLY. NOT FOR USE IN DIAGNOSTIC, THERAPEUTIC OR COSMETIC PROCEDURES. NOT FOR HUMAN OR ANIMAL CONSUMPTION.