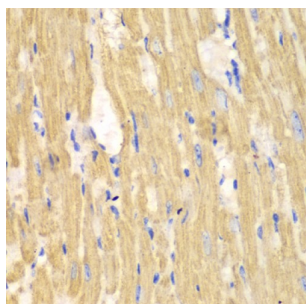


Calpain-1 Catalytic Subunit (CAPN1) Antibody

Catalogue No.: abx001086



Immunohistochemistry of paraffin-embedded Mouse heart using CAPN1 Antibody (1/100 dilution, 40x lens).

CAPN1 Antibody is a Rabbit Polyclonal antibody against CAPN1. The calpains, calcium-activated neutral proteases, are nonlysosomal, intracellular cysteine proteases. The mammalian calpains include ubiquitous, stomach-specific, and muscle-specific proteins. The ubiquitous enzymes consist of heterodimers with distinct large, catalytic subunits associated with a common small, regulatory subunit. This gene encodes the large subunit of the ubiquitous enzyme, calpain 1. Several transcript variants encoding two different isoforms have been found for this gene.

Target:	Calpain-1 Catalytic Subunit (CAPN1)
Clonality:	Polyclonal
Reactivity:	Human, Mouse
Tested Applications:	IHC
Host:	Rabbit
Recommended dilutions:	IHC-P: 1/50 - 1/200. Not tested in IHC-F. Optimal dilutions/concentrations should be determined by the end user.
Conjugation:	Unconjugated
Immunogen:	Recombinant fusion protein corresponding to human CAPN1
Isotype:	IgG
Form:	Liquid
Purification:	Purified by affinity chromatography.
Storage:	Aliquot and store at -20°C. Avoid repeated freeze/thaw cycles.
UniProt Primary AC:	P07384 (UniProt , ExPASy)

Datasheet

Version: 4.0.0

Revision date: 14 Aug 2025



Gene Symbol: CAPN1

GeneID: [823](#)

NCBI Accession: NP_005177.2

KEGG: hsa:823

String: [9606.ENSP00000431984](#)

Buffer: PBS, pH 7.3, containing 0.02% sodium azide, 50% glycerol.

Concentration: 1 mg/ml

Note: THIS PRODUCT IS FOR RESEARCH USE ONLY. NOT FOR USE IN DIAGNOSTIC, THERAPEUTIC OR COSMETIC PROCEDURES. NOT FOR HUMAN OR ANIMAL CONSUMPTION.

For Reference Only