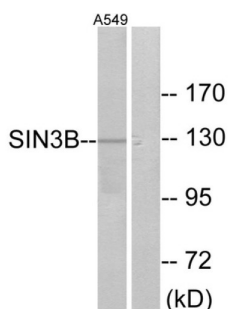
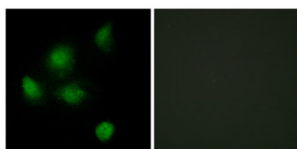


SIN3 Transcription Regulator Family Member B (SIN3B) Antibody

Catalogue No.: abx013316



Western blot analysis of extracts from A549 cells, using SIN3B antibody.



Immunofluorescence analysis of HeLa cells, using SIN3B antibody. The image on the right is treated with the peptide.

Rabbit polyclonal antibody against SIN3 Transcription Regulator Family Member B (SIN3B) protein. Immunogen region is Internal.

Target: SIN3 Transcription Regulator Family Member B (SIN3B)

Clonality: Polyclonal

Reactivity: Human

Tested Applications: ELISA, WB, IF/ICC

Host: Rabbit

Recommended dilutions: ELISA: 1/1000, WB: 1/500 - 1/3000, IF/ICC: 1/100 - 1/500. Optimal dilutions/concentrations should be determined by the end user.

Conjugation: Unconjugated

Immunogen: The antiserum was produced against synthesized peptide derived from internal of human SIN3B.

Isotype: IgG

Form: Liquid

Datasheet

Version: 4.0.0

Revision date: 30 Aug 2025



Purification:	Purified from rabbit antiserum by affinity chromatography using epitope-specific immunogen.
Storage:	Aliquot and store at -20°C. Avoid repeated freeze/thaw cycles.
UniProt Primary AC:	O75182 (UniProt , ExPASy)
KEGG:	hsa:23309
String:	9606.ENSP00000369131
Buffer:	PBS (without Mg^{2+} and Ca^{2+}), pH 7.4, 150 mM NaCl, 0.02% sodium azide, 50% glycerol.
Specificity:	Detects endogenous levels of total SIN3B protein.
Concentration:	1 mg/ml
Note:	THIS PRODUCT IS FOR RESEARCH USE ONLY. NOT FOR USE IN DIAGNOSTIC, THERAPEUTIC OR COSMETIC PROCEDURES. NOT FOR HUMAN OR ANIMAL CONSUMPTION.

For Reference Only