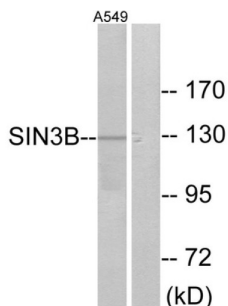
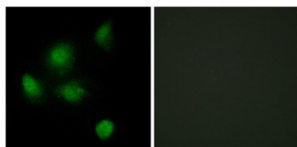


## SIN3 Transcription Regulator Family Member B (SIN3B) Antibody

Catalogue No.: abx013316



Western blot analysis of extracts from A549 cells, using SIN3B antibody.



Immunofluorescence analysis of HeLa cells, using SIN3B antibody. The image on the right is treated with the peptide.

Rabbit polyclonal antibody against SIN3 Transcription Regulator Family Member B (SIN3B) protein. Immunogen region is Internal.

**Target:** SIN3 Transcription Regulator Family Member B (SIN3B)

**Clonality:** Polyclonal

**Reactivity:** Human

**Tested Applications:** ELISA, WB, IF/ICC

**Host:** Rabbit

**Recommended dilutions:** ELISA: 1/1000, WB: 1/500 - 1/3000, IF/ICC: 1/100 - 1/500. Optimal dilutions/concentrations should be determined by the end user.

**Conjugation:** Unconjugated

**Immunogen:** The antiserum was produced against synthesized peptide derived from internal of human SIN3B.

**Isotype:** IgG

**Form:** Liquid

# Datasheet

Version: 4.0.0  
Revision date: 01 Jul 2025



<b>Purification:</b>	Purified from rabbit antiserum by affinity chromatography using epitope-specific immunogen.
<b>Storage:</b>	Aliquot and store at -20°C. Avoid repeated freeze/thaw cycles.
<b>UniProt Primary AC:</b>	O75182 ( <a href="#">UniProt</a> , <a href="#">ExPASy</a> )
<b>KEGG:</b>	hsa:23309
<b>String:</b>	<a href="#">9606.ENSP00000369131</a>
<b>Buffer:</b>	PBS (without $Mg^{2+}$ and $Ca^{2+}$ ), pH 7.4, 150 mM NaCl, 0.02% sodium azide, 50% glycerol.
<b>Specificity:</b>	Detects endogenous levels of total SIN3B protein.
<b>Concentration:</b>	1 mg/ml
<b>Note:</b>	THIS PRODUCT IS FOR RESEARCH USE ONLY. NOT FOR USE IN DIAGNOSTIC, THERAPEUTIC OR COSMETIC PROCEDURES. NOT FOR HUMAN OR ANIMAL CONSUMPTION.

For Reference Only