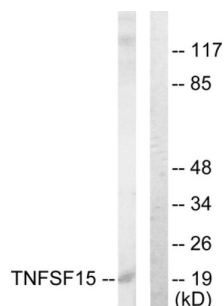
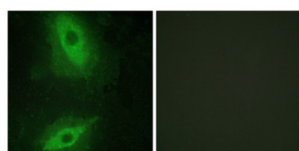


Tumor Necrosis Factor Ligand Superfamily Member 15 (TNFSF15) Antibody

Catalogue No.: abx013335



Western blot analysis of extracts from COLO205 cells, using TNFSF15 antibody.



Immunofluorescence analysis of HeLa cells, using TNFSF15 antibody.

Rabbit polyclonal antibody against Tumor Necrosis Factor Ligand Superfamily Member 15 (TNFSF15) protein. Immunogen region is C-terminal.

Target: Tumor Necrosis Factor Ligand Superfamily Member 15 (TNFSF15)

Clonality: Polyclonal

Reactivity: Human

Tested Applications: ELISA, WB, IF/ICC

Host: Rabbit

Recommended dilutions: WB: 1/500 - 1/3000, IF/ICC: 1/100 - 1/500, ELISA: 1/20000. Optimal dilutions/concentrations should be determined by the end user.

Conjugation: Unconjugated

Immunogen: The antiserum was produced against synthesized peptide derived from C-terminal of human TNFSF15.

Isotype: IgG

Form: Liquid

Datasheet

Version: 2.0.0

Revision date: 13 Sep 2025



Purification: Purified from rabbit antiserum by affinity chromatography using epitope-specific immunogen.

Storage: Aliquot and store at -20°C. Avoid repeated freeze/thaw cycles.

UniProt Primary AC: O95150 ([UniProt](#), [ExPASy](#))

Buffer: PBS (without Mg^{2+} and Ca^{2+}), pH 7.4, 150 mM NaCl, 0.02% sodium azide, 50% glycerol.

Concentration: 1 mg/ml

Note: THIS PRODUCT IS FOR RESEARCH USE ONLY. NOT FOR USE IN DIAGNOSTIC, THERAPEUTIC OR COSMETIC PROCEDURES. NOT FOR HUMAN OR ANIMAL CONSUMPTION.

For Reference Only