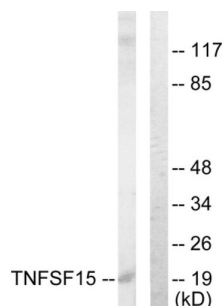
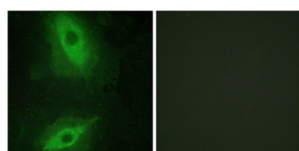


# Tumor Necrosis Factor Ligand Superfamily Member 15 (TNFSF15) Antibody

Catalogue No.: abx013335



Western blot analysis of extracts from COLO205 cells, using TNFSF15 antibody.



Immunofluorescence analysis of HeLa cells, using TNFSF15 antibody.

Rabbit polyclonal antibody against Tumor Necrosis Factor Ligand Superfamily Member 15 (TNFSF15) protein. Immunogen region is C-terminal.

**Target:** Tumor Necrosis Factor Ligand Superfamily Member 15 (TNFSF15)

**Clonality:** Polyclonal

**Reactivity:** Human

**Tested Applications:** ELISA, WB, IF/ICC

**Host:** Rabbit

**Recommended dilutions:** WB: 1/500 - 1/3000, IF/ICC: 1/100 - 1/500, ELISA: 1/20000. Optimal dilutions/concentrations should be determined by the end user.

**Conjugation:** Unconjugated

**Immunogen:** The antiserum was produced against synthesized peptide derived from C-terminal of human TNFSF15.

**Isotype:** IgG

**Form:** Liquid

# Datasheet

Version: 2.0.0

Revision date: 02 May 2025



**Purification:** Purified from rabbit antiserum by affinity chromatography using epitope-specific immunogen.

**Storage:** Aliquot and store at -20°C. Avoid repeated freeze/thaw cycles.

**UniProt Primary AC:** O95150 ([UniProt](#), [ExPASy](#))

**Buffer:** PBS (without  $Mg^{2+}$  and  $Ca^{2+}$ ), pH 7.4, 150 mM NaCl, 0.02% sodium azide, 50% glycerol.

**Concentration:** 1 mg/ml

**Note:** THIS PRODUCT IS FOR RESEARCH USE ONLY. NOT FOR USE IN DIAGNOSTIC, THERAPEUTIC OR COSMETIC PROCEDURES. NOT FOR HUMAN OR ANIMAL CONSUMPTION.

For Reference Only