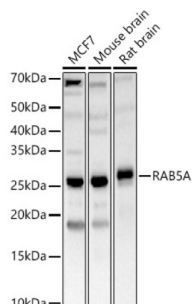
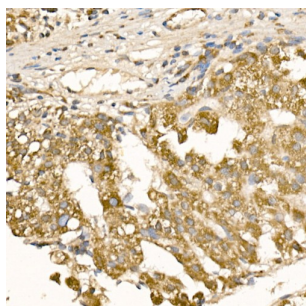


## RAB5A, Member RAS Oncogene Family (RAB5A) Antibody

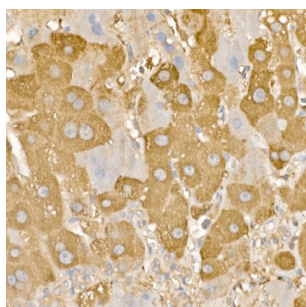
Catalogue No.: abx001094



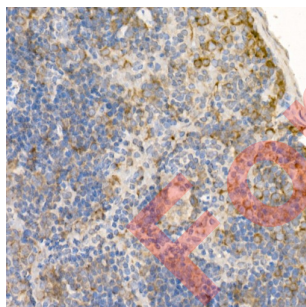
Western blot analysis of various lysates, using RAB5A Antibody at 1/700 dilution. Secondary antibody: HRP-conjugated Goat anti-Rabbit IgG (H+L) at 1/10000 dilution. Lysates/proteins: 25 µg per lane. Blocking buffer: 3% nonfat dry milk in TBST. Exposure time: 30s.



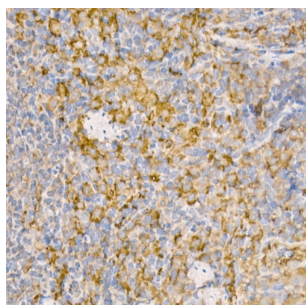
Immunohistochemistry analysis of paraffin-embedded Human liver cancer using RAB5A Antibody at dilution of 1/100 (40x lens). High pressure antigen retrieval performed in 0.01 M Citrate buffer (pH 6.0) prior to IHC staining.



Immunohistochemistry analysis of paraffin-embedded Human liver using RAB5A Antibody at dilution of 1/100 (40x lens). High pressure antigen retrieval performed in 0.01 M Citrate buffer (pH 6.0) prior to IHC staining.



Immunohistochemistry analysis of paraffin-embedded Mouse spleen using RAB5A Antibody at dilution of 1/100 (40x lens). High pressure antigen retrieval performed in 0.01 M Citrate buffer (pH 6.0) prior to IHC staining.

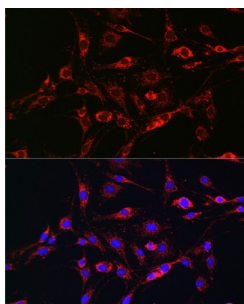


Immunohistochemistry analysis of paraffin-embedded Rat spleen using RAB5A Antibody at dilution of 1/100 (40x lens). High pressure antigen retrieval performed in 0.01 M Citrate buffer (pH 6.0) prior to IHC staining.

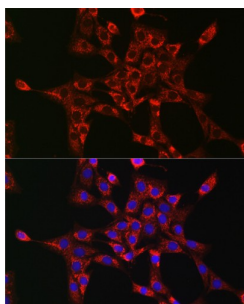
# Datasheet

Version: 5.0.0

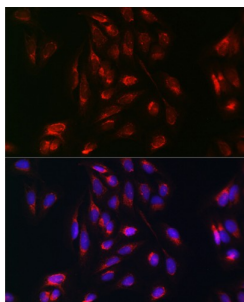
Revision date: 18 Aug 2025



Immunofluorescence analysis of C6 cells using RAB5A Antibody at dilution of 1/100 (40x lens). Secondary antibody: Cy3-conjugated Goat anti-Rabbit IgG (H+L) at 1/500 dilution. Blue: DAPI for nuclear staining.



Immunofluorescence analysis of NIH-3T3 cells using RAB5A Antibody at dilution of 1/100 (40x lens). Secondary antibody: Cy3-conjugated Goat anti-Rabbit IgG (H+L) at 1/500 dilution. Blue: DAPI for nuclear staining.



Immunofluorescence analysis of U-2 OS cells using RAB5A Antibody at dilution of 1/100 (40x lens). Secondary antibody: Cy3-conjugated Goat anti-Rabbit IgG (H+L) at 1/500 dilution. Blue: DAPI for nuclear staining.

RAB5A Antibody is a Rabbit Polyclonal antibody against RAB5A. RAB5A (RAB5A, member RAS oncogene family) is a protein-coding gene. Diseases associated with RAB5A include borna disease, and venezuelan equine encephalitis. GO annotations related to this gene include GDP binding and GTP binding. An important paralog of this gene is RAB20.

**Target:** RAB5A, Member RAS Oncogene Family (RAB5A)

**Clonality:** Polyclonal

**Reactivity:** Human, Mouse, Rat

**Tested Applications:** ELISA, WB, IHC, IF/ICC

**Host:** Rabbit

**Recommended dilutions:** ELISA: 1 µg/ml, WB: 1/500 - 1/1000, IHC-P: 1/50 - 1/200, IF/ICC: 1/50 - 1/200. Not tested in IHC-F. Optimal dilutions/concentrations should be determined by the end user.

**Conjugation:** Unconjugated

# Datasheet

Version: 5.0.0  
Revision date: 18 Aug 2025



<b>Immunogen:</b>	Recombinant protein corresponding to RAB5A. The exact sequence is proprietary.
<b>Isotype:</b>	IgG
<b>Form:</b>	Liquid
<b>Purification:</b>	Purified by affinity chromatography.
<b>Storage:</b>	Aliquot and store at -20°C. Avoid repeated freeze/thaw cycles.
<b>UniProt Primary AC:</b>	P20339 ( <a href="#">UniProt</a> , <a href="#">ExPASy</a> )
<b>Gene Symbol:</b>	RAB5A
<b>GeneID:</b>	<a href="#">5868</a>
<b>NCBI Accession:</b>	NP_004153.2
<b>KEGG:</b>	hsa:5868
<b>String:</b>	<a href="#">9606.ENSP00000273047</a>
<b>Molecular Weight:</b>	Calculated MW: 24 kDa Observed MW: 24 kDa
<b>Buffer:</b>	PBS, pH 7.3, containing 0.01% thimerosal, 50% glycerol.
<b>Concentration:</b>	> 0.2 mg/ml
<b>Note:</b>	THIS PRODUCT IS FOR RESEARCH USE ONLY. NOT FOR USE IN DIAGNOSTIC, THERAPEUTIC OR COSMETIC PROCEDURES. NOT FOR HUMAN OR ANIMAL CONSUMPTION.