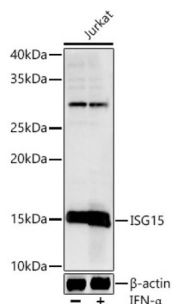
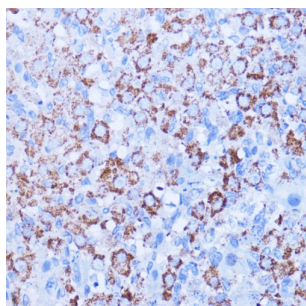


Ubiquitin-Like Protein ISG15 (ISG15) Antibody

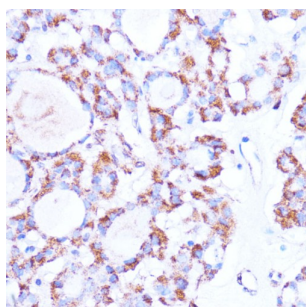
Catalogue No.: abx001096



Western blot analysis of lysates from Jurkat cells, using ISG15 Antibody at 1/1000 dilution. Jurkat cells were treated by IFN- α (100 ng/ml) at 37 °C for 30 minutes after serum-starvation overnight. Secondary antibody: HRP-conjugated Goat anti-Rabbit IgG (H+L) at 1/10000 dilution. Lysates/proteins: 25 μ g per lane. Blocking buffer: 3% nonfat dry milk in TBST. Exposure time: 5s.



Immunohistochemistry analysis of paraffin-embedded Rat ovary using ISG15 Antibody at dilution of 1/100 (40x lens). Microwave antigen retrieval performed in 0.01 M PBS Buffer (pH 7.2) prior to IHC staining.



Immunohistochemistry analysis of paraffin-embedded Human thyroid cancer using ISG15 Antibody at dilution of 1/100 (40x lens). Microwave antigen retrieval performed in 0.01 M PBS Buffer (pH 7.2) prior to IHC staining.

ISG15 Antibody is a Rabbit Polyclonal antibody against ISG15. The protein encoded by this gene is a ubiquitin-like protein that is conjugated to intracellular target proteins upon activation by interferon-alpha and interferon-beta. Several functions have been ascribed to the encoded protein, including chemotactic activity towards neutrophils, direction of ligated target proteins to intermediate filaments, cell-to-cell signaling, and antiviral activity during viral infections. While conjugates of this protein have been found to be noncovalently attached to intermediate filaments, this protein is sometimes secreted.

Target: Ubiquitin-Like Protein ISG15 (ISG15)

Clonality: Polyclonal

Reactivity: Human, Rat

Tested Applications: ELISA, WB, IHC

Host: Rabbit

Datasheet

Version: 6.0.0
Revision date: 22 Aug 2025



Recommended dilutions: ELISA: 1 µg/ml, WB: 1/500 - 1/1000, IHC-P: 1/50 - 1/200. Not tested in IHC-F. Optimal dilutions/concentrations should be determined by the end user.

Conjugation: Unconjugated

Immunogen: Recombinant protein corresponding to ISG15. The exact sequence is proprietary.

Isotype: IgG

Form: Liquid

Purification: Purified by affinity chromatography.

Storage: Aliquot and store at -20°C. Avoid repeated freeze/thaw cycles.

UniProt Primary AC: P05161 ([UniProt](#), [ExPASy](#))

Gene Symbol: ISG15

GeneID: [9636](#)

NCBI Accession: NP_005092.1

KEGG: hsa:9636

String: [9606.ENSP00000368699](#)

Molecular Weight: Calculated MW: 18 kDa
Observed MW: 15 kDa

Buffer: PBS, pH 7.3, containing 0.09% sodium azide, 50% glycerol.

Concentration: > 0.2 mg/ml

Note: THIS PRODUCT IS FOR RESEARCH USE ONLY. NOT FOR USE IN DIAGNOSTIC, THERAPEUTIC OR COSMETIC PROCEDURES. NOT FOR HUMAN OR ANIMAL CONSUMPTION.