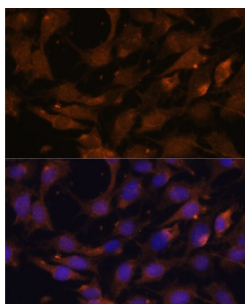


GTPase KRas (KRAS) Antibody

Catalogue No.: abx001104



Immunofluorescence analysis of C6 cells using KRAS Antibody (1/100 dilution). Blue: DAPI for nuclear staining.

KRAS Antibody is a Rabbit Polyclonal antibody against KRAS. This gene, a Kirsten ras oncogene homolog from the mammalian ras gene family, encodes a protein that is a member of the small GTPase superfamily. A single amino acid substitution is responsible for an activating mutation. The transforming protein that results is implicated in various malignancies, including lung adenocarcinoma, mucinous adenoma, ductal carcinoma of the pancreas and colorectal carcinoma. Alternative splicing leads to variants encoding two isoforms that differ in the C-terminal region.

Target: GTPase KRas (KRAS)

Clonality: Polyclonal

Reactivity: Human, Mouse, Rat

Tested Applications: IF/ICC

Host: Rabbit

Recommended dilutions: IF/ICC: 1/50 - 1/200. Optimal dilutions/concentrations should be determined by the end user.

Conjugation: Unconjugated

Immunogen: Recombinant protein corresponding to human KRAS

Isotype: IgG

Form: Liquid

Purification: Purified by affinity chromatography.

Storage: Aliquot and store at -20°C. Avoid repeated freeze/thaw cycles.

UniProt Primary AC: P01116 ([UniProt](#), [ExPASy](#))

Datasheet

Version: 9.0.0

Revision date: 10 May 2025



Gene Symbol: KRAS

GeneID: [3845](#)

NCBI Accession: NP_203524.1

KEGG: hsa:3845

String: [9606.ENSP00000256078](#)

Buffer: PBS, pH 7.3, containing 0.02% sodium azide, 50% glycerol.

Concentration: 1 mg/ml

Note: THIS PRODUCT IS FOR RESEARCH USE ONLY. NOT FOR USE IN DIAGNOSTIC, THERAPEUTIC OR COSMETIC PROCEDURES. NOT FOR HUMAN OR ANIMAL CONSUMPTION.

For Reference Only