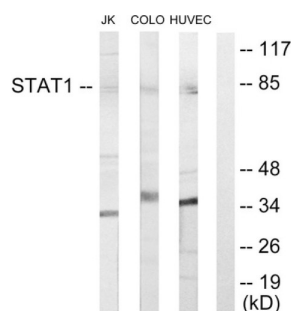


Signal Transducer And Activator of Transcription 1 (STAT1) Antibody

Catalogue No.: abx013486



Western blot analysis of extracts from Jurkat cells, COLO205 cells and HUVEC cells, using STAT1 antibody.

Rabbit polyclonal antibody against STAT1 protein. Immunogen region is Internal.

Target:	Signal Transducer And Activator of Transcription 1 (STAT1)
Clonality:	Polyclonal
Reactivity:	Human
Tested Applications:	ELISA, WB
Host:	Rabbit
Recommended dilutions:	WB: 1/500 - 1/3000, ELISA: 1/20000. Optimal dilutions/concentrations should be determined by the end user.
Conjugation:	Unconjugated
Immunogen:	The antiserum was produced against synthesized peptide derived from internal of human STAT1.
Isotype:	IgG
Form:	Liquid
Purification:	Purified from rabbit antiserum by affinity chromatography using epitope-specific immunogen.
Storage:	Aliquot and store at -20°C. Avoid repeated freeze/thaw cycles.
UniProt Primary AC:	P42224 (UniProt , ExPASy)
Buffer:	PBS (without Mg ²⁺ and Ca ²⁺), pH 7.4, 150 mM NaCl, 0.02% sodium azide, 50% glycerol.
Concentration:	1 mg/ml

Datasheet

Version: 2.0.0

Revision date: 12 Aug 2025



Note:

THIS PRODUCT IS FOR RESEARCH USE ONLY. NOT FOR USE IN DIAGNOSTIC, THERAPEUTIC OR COSMETIC PROCEDURES. NOT FOR HUMAN OR ANIMAL CONSUMPTION.

For Reference Only