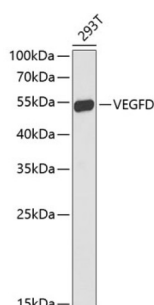


Vascular Endothelial Growth Factor D (FIGF) Antibody

Catalogue No.: abx001107



Western blot analysis of extracts of 293T cells using FIGF Antibody (1/1000 dilution).

FIGF Antibody is a Rabbit Polyclonal antibody against FIGF. The protein encoded by this gene is a member of the platelet-derived growth factor/vascular endothelial growth factor (PDGF/VEGF) family and is active in angiogenesis, lymphangiogenesis, and endothelial cell growth. This secreted protein undergoes a complex proteolytic maturation, generating multiple processed forms which bind and activate VEGFR-2 and VEGFR-3 receptors. This protein is structurally and functionally similar to vascular endothelial growth factor C. Read-through transcription has been observed between this locus and the upstream PIR (GeneID 8544) locus. [provided by RefSeq, Feb 2011].

Target:	Vascular Endothelial Growth Factor D (FIGF)
Clonality:	Polyclonal
Reactivity:	Human
Tested Applications:	WB
Host:	Rabbit
Recommended dilutions:	WB: 1/500 - 1/2000. Optimal dilutions/concentrations should be determined by the end user.
Conjugation:	Unconjugated
Immunogen:	Recombinant fusion protein corresponding to human FIGF
Isotype:	IgG
Form:	Liquid
Purification:	Purified by affinity chromatography.
Storage:	Aliquot and store at -20°C. Avoid repeated freeze/thaw cycles.
UniProt Primary AC:	O43915 (UniProt , ExPASy)

Datasheet

Version: 4.0.0

Revision date: 12 Mar 2025



Gene Symbol: VEGFD

GeneID: [2277](#)

NCBI Accession: NP_004460.1

KEGG: hsa:2277

String: [9606.ENSP00000297904](#)

Molecular Weight: Calculated MW: 40 kDa
Observed MW: 54 kDa

Buffer: PBS, pH 7.3, containing 0.02% sodium azide, 50% glycerol.

Concentration: 1 mg/ml

Note: THIS PRODUCT IS FOR RESEARCH USE ONLY. NOT FOR USE IN DIAGNOSTIC, THERAPEUTIC OR COSMETIC PROCEDURES. NOT FOR HUMAN OR ANIMAL CONSUMPTION.

For Reference Only