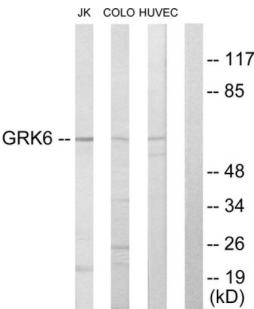
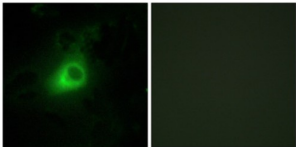


# G Protein-Coupled Receptor Kinase 6 (GRK6) Antibody

Catalogue No.:abx013489



Western blot analysis of extracts from Jurkat cells, COLO205 cells and HUVEC cells, using GRK6 antibody.



Immunofluorescence analysis of HeLa cells, using GRK6 antibody.

Rabbit polyclonal antibody against GRK6 protein. Immunogen region is N-terminal.

<b>Target:</b>	G Protein-Coupled Receptor Kinase 6 (GRK6)
<b>Clonality:</b>	Polyclonal
<b>Reactivity:</b>	Human, Mouse, Rat
<b>Tested Applications:</b>	ELISA, WB, IF/ICC
<b>Host:</b>	Rabbit
<b>Recommended dilutions:</b>	WB: 1/500 - 1/3000, IF/ICC: 1/100 - 1/500, ELISA: 1/10000. Optimal dilutions/concentrations should be determined by the end user.
<b>Conjugation:</b>	Unconjugated
<b>Immunogen:</b>	The antiserum was produced against synthesized peptide derived from N-terminal of human GRK6.
<b>Isotype:</b>	IgG
<b>Form:</b>	Liquid
<b>Purification:</b>	Purified from rabbit antiserum by affinity chromatography using epitope-specific immunogen.

# Datasheet

Version: 2.0.0

Revision date: 05 Jun 2025



**Storage:** Aliquot and store at -20°C. Avoid repeated freeze/thaw cycles.

**UniProt Primary AC:** P43250 ([UniProt](#), [ExPASy](#))

**Enzyme Commission Number:** EC 2.7.11.16

**Buffer:** PBS (without  $Mg^{2+}$  and  $Ca^{2+}$ ), pH 7.4, 150 mM NaCl, 0.02% sodium azide, 50% glycerol.

**Concentration:** 1 mg/ml

**Note:** THIS PRODUCT IS FOR RESEARCH USE ONLY. NOT FOR USE IN DIAGNOSTIC, THERAPEUTIC OR COSMETIC PROCEDURES. NOT FOR HUMAN OR ANIMAL CONSUMPTION.

For Reference Only