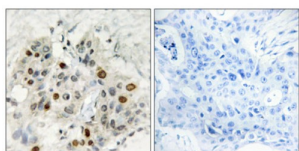


AF4/FMR2 Family Member 1 (AF4) Antibody

Catalogue No.: abx013520



Immunohistochemistry analysis of paraffin-embedded human breast carcinoma tissue, using AF4 antibody.

Rabbit polyclonal antibody against AF4 protein. Immunogen region is N-terminal.

Target:	AF4/FMR2 Family Member 1 (AF4)
Clonality:	Polyclonal
Reactivity:	Human, Mouse
Tested Applications:	ELISA, IHC
Host:	Rabbit
Recommended dilutions:	IHC: 1/50 - 1/100, ELISA: 1/20000. Optimal dilutions/concentrations should be determined by the end user.
Conjugation:	Unconjugated
Immunogen:	The antiserum was produced against synthesized peptide derived from N-terminal of human AF4.
Isotype:	IgG
Form:	Liquid
Purification:	Purified from rabbit antiserum by affinity chromatography using epitope-specific immunogen.
Storage:	Aliquot and store at -20°C. Avoid repeated freeze/thaw cycles.
UniProt Primary AC:	P51825 (UniProt , ExPASy)
KEGG:	hsa:4299
String:	9606.ENSP00000378578

Datasheet

Version: 5.0.0

Revision date: 01 Jun 2025



Sequence: CRIREKERRNQEAHQ

Buffer: PBS (without Mg^{2+} and Ca^{2+}), pH 7.4, 150 mM NaCl, 0.02% sodium azide, 50% glycerol.

Concentration: 1 mg/ml

Note: THIS PRODUCT IS FOR RESEARCH USE ONLY. NOT FOR USE IN DIAGNOSTIC, THERAPEUTIC OR COSMETIC PROCEDURES. NOT FOR HUMAN OR ANIMAL CONSUMPTION.

For Reference Only