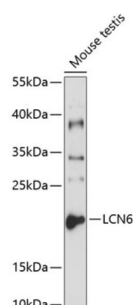


## Lipocalin 6 (LCN6) Antibody

Catalogue No.: abx001116



Western blot analysis of extracts of mouse testis using LCN6 Antibody (1/1000 dilution).

LCN6 Antibody is a Rabbit Polyclonal antibody against LCN6. The Lipocalin family is composed of structurally conserved hydrophobic ligand binding proteins and is represented in all major taxonomic groups from prokaryotes to primates. Members of the lipocalin family are characterized by several common molecular-recognition properties: the ability to bind a range of small hydrophobic molecules, binding to specific cell-surface receptors and the formation of complexes with soluble macromolecules. Lipocalin-6, also known as LCN5, hLcn5, UNQ643 or LCN6, is a 163 amino acid protein that is predominantly expressed in epididymis. Lipocalin-6 localizes to the head and tail of spermatozoa, with the highest concentration on the post-acrosomal region of the head. Belonging to the calycin superfamily, Lipocalin-6 may play a role in sperm maturation. The gene encoding Lipocalin-6 maps to human chromosome 9, which houses over 900 genes and comprises nearly 4% of the human genome.

**Target:** Lipocalin 6 (LCN6)

**Clonality:** Polyclonal

**Reactivity:** Mouse, Rat

**Tested Applications:** WB

**Host:** Rabbit

**Recommended dilutions:** WB: 1/500 - 1/2000. Optimal dilutions/concentrations should be determined by the end user.

**Conjugation:** Unconjugated

**Immunogen:** Recombinant fusion protein corresponding to human LCN6

**Isotype:** IgG

**Form:** Liquid

**Purification:** Purified by affinity chromatography.

**Storage:** Aliquot and store at -20°C. Avoid repeated freeze/thaw cycles.

# Datasheet

Version: 3.0.0  
Revision date: 07 Jun 2025



**UniProt Primary AC:** P62502 ([UniProt](#), [ExPASy](#))

**Gene Symbol:** LCN6

**GeneID:** [158062](#)

**NCBI Accession:** NP\_945184.1

**KEGG:** hsa:158062

**String:** [9606.ENSP00000339621](#)

**Molecular Weight:** Calculated MW: 18 kDa  
Observed MW: 18 kDa

**Buffer:** PBS, pH 7.3, containing 0.01% thiomersal, 50% glycerol.

**Concentration:** 1 mg/ml

**Note:** THIS PRODUCT IS FOR RESEARCH USE ONLY. NOT FOR USE IN DIAGNOSTIC, THERAPEUTIC OR COSMETIC PROCEDURES. NOT FOR HUMAN OR ANIMAL CONSUMPTION.