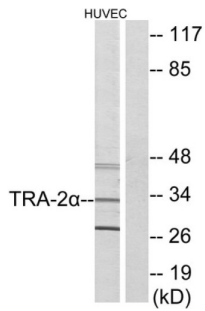
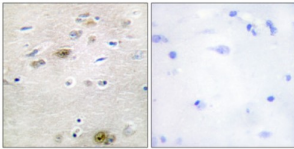


## Transformer-2 Protein Homolog Alpha (TRA-2 alpha) Antibody

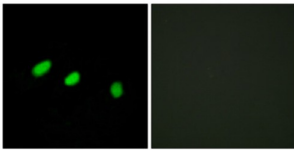
Catalogue No.: abx013595



Western blot analysis of extracts from HUVEC cells, using TRA-2 alpha antibody.



Immunohistochemistry analysis of paraffin-embedded human brain tissue using TRA-2 alpha antibody.



Immunofluorescence analysis of HeLa cells, using TRA-2 alpha antibody.

Rabbit polyclonal antibody against TRA-2 alpha protein. Immunogen region is C-terminal.

**Target:** Transformer-2 Protein Homolog Alpha (TRA-2 alpha)

**Clonality:** Polyclonal

**Reactivity:** Human, Mouse

**Tested Applications:** ELISA, WB, IHC, IF/ICC

**Host:** Rabbit

**Recommended dilutions:** WB: 1/500 - 1/3000, IHC: 1/50 - 1/100, IF/ICC: 1/100 - 1/500, ELISA: 1/20000. Optimal dilutions/concentrations should be determined by the end user.

**Conjugation:** Unconjugated

# Datasheet

Version: 4.0.0  
Revision date: 16 Mar 2025



<b>Immunogen:</b>	The antiserum was produced against synthesized peptide derived from C-terminal of human TRA-2 alpha.
<b>Isotype:</b>	IgG
<b>Form:</b>	Liquid
<b>Purification:</b>	Purified from rabbit antiserum by affinity chromatography using epitope-specific immunogen.
<b>Storage:</b>	Aliquot and store at -20°C. Avoid repeated freeze/thaw cycles.
<b>UniProt Primary AC:</b>	Q13595 ( <a href="#">UniProt</a> , <a href="#">ExpASY</a> )
<b>KEGG:</b>	hsa:29896
<b>String:</b>	<a href="#">9606.ENSP00000297071</a>
<b>Sequence:</b>	CGYDRGYDRYEDYDY
<b>Buffer:</b>	PBS (without Mg <sup>2+</sup> and Ca <sup>2+</sup> ), pH 7.4, 150 mM NaCl, 0.02% sodium azide, 50% glycerol.
<b>Concentration:</b>	1 mg/ml
<b>Note:</b>	THIS PRODUCT IS FOR RESEARCH USE ONLY. NOT FOR USE IN DIAGNOSTIC, THERAPEUTIC OR COSMETIC PROCEDURES. NOT FOR HUMAN OR ANIMAL CONSUMPTION.

For Reference Only