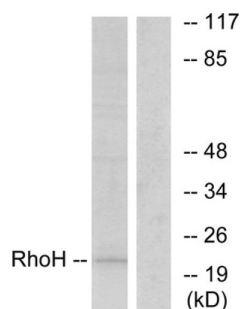
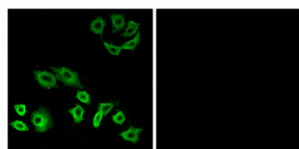


Ras Homolog Family Member H (RHOH) Antibody

Catalogue No.: abx013628



Western blot analysis of extracts from HT-29 cells, using RHOH antibody.



Immunofluorescence analysis of A549 cells, using RHOH antibody.

Rabbit polyclonal antibody against RHOH protein. Immunogen region is C-terminal.

Target: Ras Homolog Family Member H (RHOH)

Clonality: Polyclonal

Reactivity: Human, Mouse, Rat

Tested Applications: ELISA, WB, IF/ICC

Host: Rabbit

Recommended dilutions: WB: 1/500 - 1/3000, IF/ICC: 1/100 - 1/500, ELISA: 1/5000. Optimal dilutions/concentrations should be determined by the end user.

Conjugation: Unconjugated

Immunogen: The antiserum was produced against synthesized peptide derived from C-terminal of human RhoH.

Isotype: IgG

Form: Liquid

Purification: Purified from rabbit antiserum by affinity chromatography using epitope-specific immunogen.

Datasheet

Version: 3.0.0

Revision date: 28 Aug 2025



Storage:	Aliquot and store at -20°C. Avoid repeated freeze/thaw cycles.
UniProt Primary AC:	Q15669 (UniProt , ExPASy)
KEGG:	hsa:399
String:	9606.ENSP00000371219
Buffer:	PBS (without Mg^{2+} and Ca^{2+}), pH 7.4, 150 mM NaCl, 0.02% sodium azide, 50% glycerol.
Concentration:	1 mg/ml
Note:	THIS PRODUCT IS FOR RESEARCH USE ONLY. NOT FOR USE IN DIAGNOSTIC, THERAPEUTIC OR COSMETIC PROCEDURES. NOT FOR HUMAN OR ANIMAL CONSUMPTION.

For Reference Only