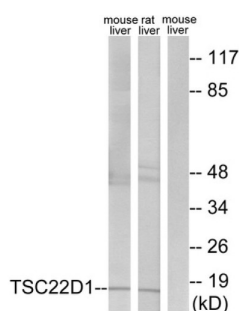
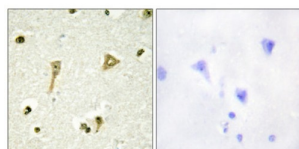


TSC22 Domain Family Protein 1 (TSC22D1) Antibody

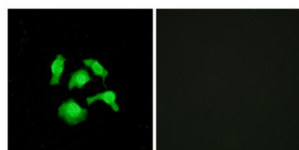
Catalogue No.: abx013630



Western blot analysis of extracts from mouse liver cells and rat liver cells, using TSC22D1 antibody.



Immunohistochemistry analysis of paraffin-embedded human brain tissue using TSC22D1 antibody.



Immunofluorescence analysis of HepG2 cells, using TSC22D1 antibody.

Rabbit polyclonal antibody against TSC22 Domain Family Protein 1 (TSC22D1) protein. Immunogen region is N-terminal.

Target: TSC22 Domain Family Protein 1 (TSC22D1)

Clonality: Polyclonal

Reactivity: Human, Mouse, Rat

Tested Applications: ELISA, WB, IHC, IF/ICC

Host: Rabbit

Recommended dilutions: WB: 1/500 - 1/3000, IHC: 1/50 - 1/100, IF/ICC: 1/100 - 1/500, ELISA: 1/20000. Optimal dilutions/concentrations should be determined by the end user.

Conjugation: Unconjugated

Datasheet

Version: 3.0.0
Revision date: 02 May 2025



Immunogen:	The antiserum was produced against synthesized peptide derived from N-terminal of human TSC22D1.
Isotype:	IgG
Form:	Liquid
Purification:	Purified from rabbit antiserum by affinity chromatography using epitope-specific immunogen.
Storage:	Aliquot and store at -20°C. Avoid repeated freeze/thaw cycles.
UniProt Primary AC:	Q15714 (UniProt , ExPASy)
Sequence:	CEVEVLKEQIKELIE
Buffer:	PBS (without Mg^{2+} and Ca^{2+}), pH 7.4, 150 mM NaCl, 0.02% sodium azide, 50% glycerol.
Concentration:	1 mg/ml
Note:	THIS PRODUCT IS FOR RESEARCH USE ONLY. NOT FOR USE IN DIAGNOSTIC, THERAPEUTIC OR COSMETIC PROCEDURES. NOT FOR HUMAN OR ANIMAL CONSUMPTION.

For Reference Only