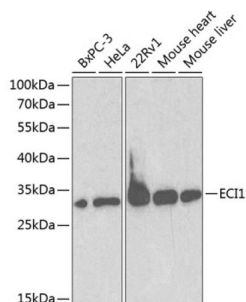
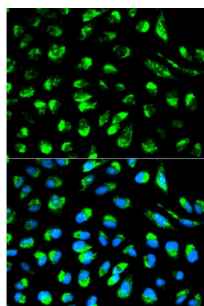


Enoyl-CoA Delta Isomerase 1, Mitochondrial (ECI1) Antibody

Catalogue No.: abx001123



Western blot analysis of extracts of various cell lines using ECI1 Antibody (1/1000 dilution).



Immunofluorescence analysis of HeLa cells using ECI1 Antibody

ECI1 Antibody is a Rabbit Polyclonal antibody against ECI1. This gene encodes a member of the hydratase/isomerase superfamily. The protein encoded is a key mitochondrial enzyme involved in beta-oxidation of unsaturated fatty acids. It catalyzes the transformation of 3-cis and 3-trans-enoyl-CoA esters arising during the stepwise degradation of cis-, mono-, and polyunsaturated fatty acids to the 2-trans-enoyl-CoA intermediates. Alternatively spliced transcript variants have been described.

Target: Enoyl-CoA Delta Isomerase 1, Mitochondrial (ECI1)

Clonality: Polyclonal

Reactivity: Human, Mouse

Tested Applications: WB, IF/ICC

Host: Rabbit

Recommended dilutions: WB: 1/500 - 1/2000, IF/ICC: 1/50 - 1/200. Optimal dilutions/concentrations should be determined by the end user.

Conjugation: Unconjugated

Immunogen: Recombinant fusion protein corresponding to human ECI1

Isotype: IgG

Datasheet

Version: 3.0.0

Revision date: 06 Jun 2025



Form:	Liquid
Purification:	Purified by affinity chromatography.
Storage:	Aliquot and store at -20°C. Avoid repeated freeze/thaw cycles.
UniProt Primary AC:	P42126 (UniProt , ExPASy)
Gene Symbol:	ECI1
GeneID:	1632
NCBI Accession:	NP_001910.2
KEGG:	hsa:1632
String:	9606.ENSP00000301729
Molecular Weight:	Calculated MW: 30 kDa/32 kDa Observed MW: 34 kDa
Buffer:	PBS, pH 7.3, containing 0.02% sodium azide, 50% glycerol.
Concentration:	1 mg/ml
Note:	THIS PRODUCT IS FOR RESEARCH USE ONLY. NOT FOR USE IN DIAGNOSTIC, THERAPEUTIC OR COSMETIC PROCEDURES. NOT FOR HUMAN OR ANIMAL CONSUMPTION.