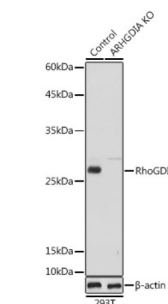
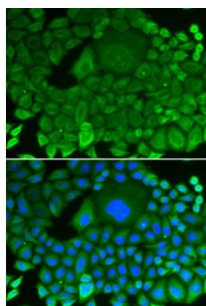


## Rho GDP-Dissociation Inhibitor 1 (ARHGDIA) Antibody

Catalogue No.: abx001126



Western blot analysis of lysates from wild type (WT) and RhoGDI knockout (KO) 293T cells, using [KO Validated] RhoGDI Antibody at 1/1000 dilution. Secondary antibody: HRP-conjugated Goat anti-Rabbit IgG (H+L) at 1/10000 dilution. Lysates/proteins: 25 µg per lane. Blocking buffer: 3% nonfat dry milk in TBST. Exposure time: 1s.



Immunofluorescence analysis of HeLa cells using [KO Validated] RhoGDI Antibody. Secondary antibody: Cy3-conjugated Goat anti-Rabbit IgG (H+L) at 1/500 dilution. Blue: DAPI for nuclear staining.

ARHGDIA Antibody is a Rabbit Polyclonal antibody against ARHGDIA. Rho family small GTPases, including Rho, Rac and cdc42, act as molecular switches, regulating processes such as cell migration, adhesion, proliferation and differentiation. They are activated by guanine nucleotide exchange factors (GEFs), which catalyze the exchange of bound GDP for GTP, and inhibited by GTPase activating proteins (GAPs), which catalyze the hydrolysis of GTP to GDP. A third level of regulation is provided by the stoichiometric binding of Rho GDP dissociation inhibitor (RhoGDI). RhoGDI affects Rho activity by inhibiting nucleotide exchange and membrane association, regulating activity and localization (Reviewed in 1, 2). The inhibitory and shuttling functions of RhoGDI have been uncoupled using mutant forms of RhoGDI (3). Phosphorylation of GDIs and/or GTPases can modulate their affinity for each other and, therefore, GTPase mediated signaling. PAK1 phosphorylation of RhoGDI at serines 101 and 174 causes release and activation of Rac1, but not RhoA (4).

**Target:** Rho GDP-Dissociation Inhibitor 1 (ARHGDIA)

**Clonality:** Polyclonal

**Reactivity:** Human, Mouse, Rat

**Tested Applications:** ELISA, WB, IF/ICC

**Host:** Rabbit

**Recommended dilutions:** ELISA: 1 µg/ml, WB: 1/500 - 1/1000, IF/ICC: 1/50 - 1/200. Optimal dilutions/concentrations should be determined by the end user.

**Conjugation:** Unconjugated

**Immunogen:** Recombinant protein corresponding to ARHGDIA. The exact sequence is proprietary.

# Datasheet

Version: 5.0.0  
Revision date: 29 Aug 2025



Isotype:	IgG
Form:	Liquid
Purification:	Purified by affinity chromatography.
Storage:	Aliquot and store at -20°C. Avoid repeated freeze/thaw cycles.
UniProt Primary AC:	P52565 ( <a href="#">UniProt</a> , <a href="#">ExPASy</a> )
Gene Symbol:	ARHGDI
GeneID:	<a href="#">396</a>
NCBI Accession:	NP_001172006.1
KEGG:	hsa:396
String:	<a href="#">9606.ENSP00000269321</a>
Molecular Weight:	Calculated MW: 23 kDa Observed MW: 25 kDa
Buffer:	PBS, pH 7.3, containing 0.02% sodium azide, 50% glycerol.
Concentration:	> 0.2 mg/ml
Note:	THIS PRODUCT IS FOR RESEARCH USE ONLY. NOT FOR USE IN DIAGNOSTIC, THERAPEUTIC OR COSMETIC PROCEDURES. NOT FOR HUMAN OR ANIMAL CONSUMPTION.