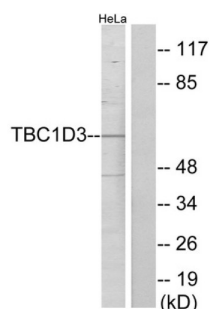


TBC1 Domain Family Member 3 (TBC1D3) Antibody

Catalogue No.: abx013691



Western blot analysis of extracts from HeLa cells, using TBC1D3 antibody.

Rabbit polyclonal antibody against TBC1D3 protein. Immunogen region is C-terminal.

Target:	TBC1 Domain Family Member 3 (TBC1D3)
Clonality:	Polyclonal
Reactivity:	Human
Tested Applications:	ELISA, WB
Host:	Rabbit
Recommended dilutions:	WB: 1/500 - 1/3000, ELISA: 1/20000. Optimal dilutions/concentrations should be determined by the end user.
Conjugation:	Unconjugated
Immunogen:	The antiserum was produced against synthesized peptide derived from C-terminal of human TBC1D3.
Isotype:	IgG
Form:	Liquid
Purification:	Purified from rabbit antiserum by affinity chromatography using epitope-specific immunogen.
Storage:	Aliquot and store at -20°C. Avoid repeated freeze/thaw cycles.
UniProt Primary AC:	Q8IZP1 (UniProt , ExPASy) A6NDS4 (UniProt , ExPASy) Q6IPX1 (UniProt , ExPASy)
Buffer:	PBS (without Mg^{2+} and Ca^{2+}), pH 7.4, 150 mM NaCl, 0.02% sodium azide, 50% glycerol.
Concentration:	1 mg/ml

Datasheet

Version: 2.0.0

Revision date: 14 Sep 2025



Note:

THIS PRODUCT IS FOR RESEARCH USE ONLY. NOT FOR USE IN DIAGNOSTIC, THERAPEUTIC OR COSMETIC PROCEDURES. NOT FOR HUMAN OR ANIMAL CONSUMPTION.

For Reference Only