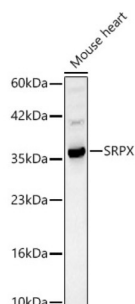
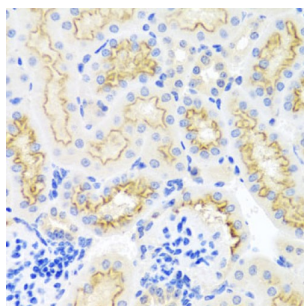


Sushi Repeat Containing Protein, X-Linked (SRPX) Antibody

Catalogue No.: abx001129



Western blot analysis of lysates from Mouse heart, using SRPX Antibody at 1/1000 dilution. Secondary antibody: HRP-conjugated Goat anti-Rabbit IgG (H+L) at 1/10000 dilution. Lysates/proteins: 25 µg per lane. Blocking buffer: 3% nonfat dry milk in TBST. Exposure time: 30s.



Immunohistochemistry analysis of paraffin-embedded Mouse kidney using SRPX Antibody at dilution of 1/100 (40x lens). Microwave antigen retrieval performed in 0.01 M PBS Buffer (pH 7.2) prior to IHC staining.

SRPX Antibody is a Rabbit Polyclonal antibody against SRPX. X-linked retinitis pigmentosa (XLRP) is a retinal degeneration disorder. The most common form of XLRP has been localized to the gene locus RP3 by linkage and deletion analysis. RP3 maps to chromosome Xp21.1 between CYBB and OTC. The sushi-repeat-containing protein, x chromosome (SRPX) gene, also designated ETX1, resides within this region and is deleted in XLRP patients. There are at least two splice variants of SRPX, one of which contains a thirty amino acid signal peptide. Both variants contain three complement control protein domains, a hydrophobic region for membrane anchorage, and a cytoplasmic carboxy terminus. SRPX is expressed in retina and heart. SRPX is highly homologous to the drs (downregulated by v-src) human homolog, which suggests a role for SRPX as a tumor suppressor.

Target: Sushi Repeat Containing Protein, X-Linked (SRPX)

Clonality: Polyclonal

Reactivity: Human, Mouse

Tested Applications: ELISA, WB, IHC

Host: Rabbit

Recommended dilutions: ELISA: 1 µg/ml, WB: 1/500 - 1/2000, IHC-P: 1/50 - 1/100. Not tested in IHC-F. Optimal dilutions/concentrations should be determined by the end user.

Conjugation: Unconjugated

Immunogen: Recombinant protein corresponding to SRPX. The exact sequence is proprietary.

Datasheet

Version: 6.0.0
Revision date: 12 Sep 2025



Isotype:	IgG
Form:	Liquid
Purification:	Purified by affinity chromatography.
Storage:	Aliquot and store at -20°C. Avoid repeated freeze/thaw cycles.
UniProt Primary AC:	P78539 (UniProt , ExPASy)
Gene Symbol:	SRPX
GeneID:	8406
NCBI Accession:	NP_006298.1
KEGG:	hsa:8406
String:	9606.ENSP00000367794
Molecular Weight:	Calculated MW: 52 kDa Observed MW: 35 kDa
Buffer:	PBS, pH 7.3, containing 0.02% sodium azide, 50% glycerol.
Concentration:	> 0.2 mg/ml
Note:	THIS PRODUCT IS FOR RESEARCH USE ONLY. NOT FOR USE IN DIAGNOSTIC, THERAPEUTIC OR COSMETIC PROCEDURES. NOT FOR HUMAN OR ANIMAL CONSUMPTION.