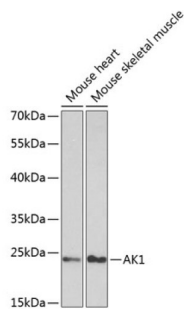
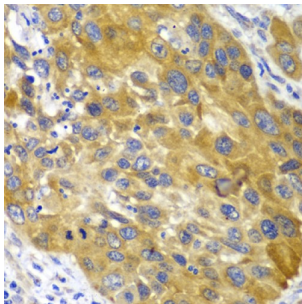


Adenylate Kinase 1 (AK1) Antibody

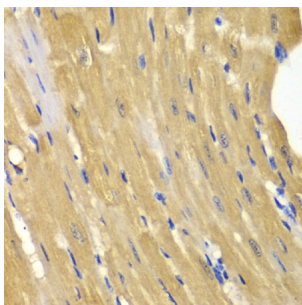
Catalogue No.: abx001130



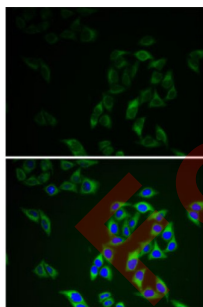
Western blot analysis of extracts of various cell lines using AK1 Antibody (1/1000 dilution).



Immunohistochemistry of paraffin-embedded Human esophageal cancer using AK1 Antibody (1/100 dilution, 40x lens).



Immunohistochemistry of paraffin-embedded Mouse heart using AK1 Antibody (1/100 dilution, 40x lens).



Immunofluorescence analysis of HeLa cells using AK1 Antibody

AK1 Antibody is a Rabbit Polyclonal antibody against AK1. Adenylate kinase is an enzyme involved in regulating the adenine nucleotide composition within a cell by catalyzing the reversible transfer of phosphate group among adinine nucleotides. Three isozymes of adenylate kinase have been identified in vertebrates, adenylate isozyme 1 (AK1), 2 (AK2) and 3 (AK3). AK1 is found in the cytosol of skeletal muscle, brain and erythrocytes, whereas AK2 and AK3 are found in the mitochondria of other tissues including liver and heart. AK1 was identified because of its association with a rare genetic disorder causing nonspherocytic hemolytic anemia where a mutation in the AK1 gene was found to reduce the catalytic activity of the enzyme. [provided by RefSeq, Jul 2008].

Datasheet

Version: 3.0.0
Revision date: 10 Apr 2025



Target:	Adenylate Kinase 1 (AK1)
Clonality:	Polyclonal
Reactivity:	Human, Mouse
Tested Applications:	WB, IHC, IF/ICC
Host:	Rabbit
Recommended dilutions:	WB: 1/500 - 1/2000, IHC-P: 1/50 - 1/200, IF/ICC: 1/50 - 1/200. Not tested in IHC-F. Optimal dilutions/concentrations should be determined by the end user.
Conjugation:	Unconjugated
Immunogen:	Recombinant fusion protein corresponding to human AK1
Isotype:	IgG
Form:	Liquid
Purification:	Purified by affinity chromatography.
Storage:	Aliquot and store at -20°C. Avoid repeated freeze/thaw cycles.
UniProt Primary AC:	P00568 (UniProt , ExPASy)
Gene Symbol:	AK1
GeneID:	203
NCBI Accession:	NP_000467.1
KEGG:	hsa:203
String:	9606.ENSP00000362271
Molecular Weight:	Calculated MW: 21 kDa Observed MW: 22 kDa
Buffer:	PBS, pH 7.3, containing 0.02% sodium azide, 50% glycerol.
Concentration:	1 mg/ml

Datasheet

Version: 3.0.0

Revision date: 10 Apr 2025



Note:

THIS PRODUCT IS FOR RESEARCH USE ONLY. NOT FOR USE IN DIAGNOSTIC, THERAPEUTIC OR COSMETIC PROCEDURES. NOT FOR HUMAN OR ANIMAL CONSUMPTION.

For Reference Only