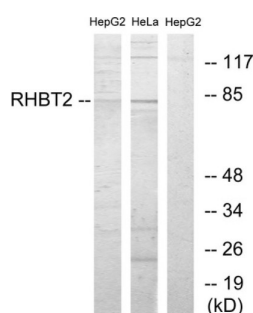


Rho-Related BTB Domain-Containing Protein 2 (RHBT2) Antibody

Catalogue No.: abx013782



Western blot analysis of extracts from HepG2 cells and HeLa cells, using RHBT2 antibody.

Rabbit polyclonal antibody against RHBT2 protein. Immunogen region is N-terminal.

Target:	Rho-Related BTB Domain-Containing Protein 2 (RHBT2)
Clonality:	Polyclonal
Reactivity:	Human, Mouse
Tested Applications:	ELISA, WB
Host:	Rabbit
Recommended dilutions:	WB: 1/500 - 1/3000, ELISA: 1/5000. Optimal dilutions/concentrations should be determined by the end user.
Conjugation:	Unconjugated
Immunogen:	The antiserum was produced against synthesized peptide derived from N-terminal of human RHBT2.
Isotype:	IgG
Form:	Liquid
Purification:	Purified from rabbit antiserum by affinity chromatography using epitope-specific immunogen.
Storage:	Aliquot and store at -20°C. Avoid repeated freeze/thaw cycles.
UniProt Primary AC:	Q9BYZ6 (UniProt , ExPASy) O94844 (UniProt , ExPASy)
Buffer:	PBS (without Mg^{2+} and Ca^{2+}), pH 7.4, 150 mM NaCl, 0.02% sodium azide, 50% glycerol.
Concentration:	1 mg/ml

Datasheet

Version: 2.0.0

Revision date: 22 Aug 2025



Note:

THIS PRODUCT IS FOR RESEARCH USE ONLY. NOT FOR USE IN DIAGNOSTIC, THERAPEUTIC OR COSMETIC PROCEDURES. NOT FOR HUMAN OR ANIMAL CONSUMPTION.

For Reference Only